

University of Minnesota

President's Recommended
Operating Budget Supplement - 2008-09

Submitted for Approval to the Board of Regents
June 13, 2008

Approved by the Board of Regents
June 13, 2008

President's Operating Budget Plan - Supplement - 2008-09

<u>Contents</u>	<u>Page</u>
I. Final Appropriation	3
II. Revised Budget Framework 2008-09	3
A. Summary – Revised Revenue Framework.....	3
B. Revenue Changes	4
Appropriations	
Tuition and the University Fee	
University Reallocations	
Other Institutional Revenues	
C. Other Revenue Adjustments/Corrections.....	5
Indirect Cost Recovery	
Central Reserves	
D. Revised Current Fund Revenue Summary.....	5
E. Summary – Revised Investment Framework	6
F. Revised Centrally Distributed and Attributed Funds	
Budget Plan for FY09.....	7
III. Special Issues.....	7
A. Capital Enhancement Fee.....	7
B. Attachments and Original Budget Document	8

Attachments:

1. Revised - Resource and Expenditure Budget Plan – University Fiscal Page
2. Revised - University of Minnesota 2008-09 Tuition Plan: Tuition Rates
6. Revised - University of Minnesota 2008-09 Tuition Plan: Course Fees
7. Revised - University of Minnesota 2008-09 Tuition Plan: Term Fees
8. Revised - University of Minnesota 2008-09 Tuition Plan: Course Fees
in Lieu of Tuition
10. Revised - Fund Forecast – Centrally Distributed and Attributed Funds
11. Revised - Resolution Related to the Fiscal Year 2008-09 Operating Budget

I. Final Appropriation

Results of 2008 Legislative Session

The University's state appropriations for FY08 and FY09 have been reduced by recent actions to balance the state budget by state political leaders from the levels reported in the submittal of the President's Operating Budget Plan in May. The changes and final appropriations are as follows:

	FY08			FY09		
	FY08 O&M	FY08 St. Specials	Total FY08	FY09 O&M	FY09 St. Specials	Total FY09
Original Appropriation	\$621,184,000	\$113,295,000	\$734,479,000	\$637,824,000	\$89,795,000	\$727,619,000
Changes	<u>(\$3,150,000)</u>	<u>(\$3,000,000)</u>	<u>(\$6,150,000)</u>	<u>(\$5,753,700)</u>	<u>(\$396,300)</u>	<u>(\$6,150,000)</u>
Revised Appropriation	\$618,034,000	\$110,295,000	\$728,329,000	\$632,070,300	\$89,398,700	\$721,469,000

For FY08, the appropriation reduction is nonrecurring in that it does not carry forward and reduce our FY09 starting base. The one-time reduction in the FY08 O&M appropriation of \$3,150,000 will be addressed through the use of central reserves. The one-time \$3,000,000 reduction in the FY08 state special appropriation is a reduction in the original one-time \$25,000,000 appropriation for the Mayo/University partnership.

Two additions were made to the University's FY08 state special appropriation as a result of a statewide budget agreement among political leaders, but they are targeted and restricted to particular purposes (and therefore not reflected above): \$300,000 was appropriated to the Center for Transportation Studies for a study to assess the public policy implications of financing new and improved transportation infrastructure in Minnesota; and \$4,900,000 was appropriated to the University for a comprehensive science and evidence-based study led by the School of Public Health on workers' lung health.

For FY09, the \$6,150,000 reduction in the appropriation is recurring and does impact our starting base for FY10. Details on how the University will address this reduction are outlined in Section II of this document.

In addition to the decreases in the current biennium, the state further reduced our starting base for FY10 by an additional \$2,550,000. As we leave FY09 with a revised appropriation of \$721,469,000 (above), we begin FY10 and FY11 with an annual base appropriation of \$718,919,000: \$2,550,000 less than the revised FY09 base.

The combined impact of the legislative changes is a loss of \$12,300,000 in the current biennium and an additional loss of \$5,100,000 in the next biennium, compared to our original base. The combined budget adjustments total \$17,400,000 compared to our original current law appropriations authorized by the 2007 legislature.

II. Revised Budget Framework 2008-09

A. Summary – Revised Revenue Framework

Within the total FY09 Operating Budget Plan, the primary funds supporting teaching, research and outreach are Operations and Maintenance, (O&M), University Fee, Tuition, State Specials, Indirect Cost Recovery (ICR) and Central Reserves – those identified as centrally distributed and attributed operating funds. These six funds total approximately 49% of externally generated revenues of the University and represent the major focus of budget development and planning. The revised FY09 plan for this group of funds includes total incremental resources of \$77,900,000, compared to \$76,800,000 in the previous submittal in May. The table of line item changes below is followed by a brief narrative description by revenue source.

	FY09 Initial Appropriation (over FY08)	FY09 Final Appropriation (over FY08)	Change
Identified Resources			
New State Appropriation-O&M	\$16,600,000	\$10,900,000	(\$5,700,000)
Change in State Specials	<u>0</u>	<u>(400,000)</u>	<u>(400,000)</u>
Subtotal State Appropriations	\$16,600,000	\$10,500,000	(\$6,100,000)
Tuition & UFee	37,300,000	36,300,000	(1,000,000)
Uncommitted FY08 Appropriation	4,800,000	4,800,000	0
University Reallocations	5,300,000	13,300,000	8,000,000
Other Institutional Revenues	5,700,000	5,900,000	200,000
Carryforward into FY09	7,100,000	7,100,000	0
Total Identified Resources	\$76,800,000	\$77,900,000	\$1,100,000

B. Revenue Changes

1. Appropriation

As stated above, the FY09 state appropriation changed by (\$6,150,000). The state gave the University the option of taking the full reduction in O&M or applying a portion of the reduction to the state specials. For FY09, the only change recommended for the state specials is to eliminate the funding on the Twin Cities and Duluth campuses for the student loan matching program - \$396,300. The program was originally designed to provide resources as the required institutional match on federally funded student loan programs (e.g., Perkins Loans). In recent years, the federal government has not provided increases in these loan programs, so the need for an institutional match has been eliminated. The remainder of the appropriation reduction, \$5,753,700, will be applied to the O&M fund.

2. Tuition and University Fee

Revenue available from tuition and the University Fee has decreased by \$1,000,000 due to one revision in the recommended tuition rates. The original budget submittal incorporated a tuition and U Fee rate increase of 7.5% for the undergraduate and graduate rates on all campuses. The budget has now been revised to incorporate a rate change of 7.25% for the undergraduate rates on all campuses. The graduate rate increase remains at 7.5% as originally proposed, and the tuition rates recommended for the professional schools have not changed – they vary according to their respective markets as originally proposed.

3. University Reallocations

Included within this revised budget recommendation is a planned reallocation of \$13.3 million, which is \$8 million more than previously recommended. The additional \$8 million represents a combination of reductions in the O&M base allocations provided to units and some internal budget adjustments or realignments to cover known operating cost increases within current allocations. Units have been directed to focus budget realignment and reduction decisions on lower priority programs and activities and to preserve programs critical to ensuring continued momentum in support of strategic positioning priorities.

4. Other Institutional Revenues

The additional \$200,000 of other institutional revenues represents an increase in the amount of recurring funds that were originally held in central administration for nonrecurring items that are now available for allocation on a recurring basis. This is essentially a correction to the earlier May submittal.

C. **Other Revenue Adjustments/Corrections**

ICR

One correction has been made in the estimated indirect cost recovery funds for the Medical School, increasing the estimate by \$312,543. No other changes were made to this fund.

Central Reserves

Due to the use of Central Reserves funds in addressing the FY08 appropriation reduction, the estimated carry-forward in this fund into FY09 has been reduced by \$3,150,000. The annual revenues and allocations in this fund have not changed, but the reduction in the carry-forward results in a corresponding reduction in the projected ending balance for the fund. For FY09, that balance will be below the threshold of 4% of the state appropriation called for in Board policy. The balance will be at 3.6% of the state appropriation, and will be restored to 4% in FY10.

D. **Revised Current Fund Revenue Summary**

The revised table below outlines the major funding sources supporting fiscal year 2006-07 expenditures, the budget for these sources for fiscal year 2007-08, and the proposed budget for 2008-09, incorporating the revenue adjustments described in the previous sections.

Current Fund Revenues Sponsored and Nonsponsored

<u>Funding Source</u>	<u>FY2006-07 Actual Revenues</u>	<u>FY2007-08 Budget Plan</u>	<u>FY2008-09 Proposed Budget</u>	<u>FY09% of Total</u>
Operations & Maintenance	\$566,440,734	\$636,043,774	\$647,144,883	21%
Tuition & University Fee	525,772,851	585,187,200	622,833,940	21%
State Specials	87,774,000	115,795,000	89,398,700	3%
Indirect Cost Recovery	100,153,315	106,527,124	109,538,697	4%
Central Reserves	26,250,000	24,500,000	21,225,000	1%
Auxiliary Enterprises	258,554,218	273,762,070	284,712,553	9%
Internal Service Orgs.	222,536,154	214,148,322	222,714,255	7%

Other Unrestricted Accounts	221,357,370	198,287,653	206,219,159	7%
Other Restricted Accounts	<u>377,829,179</u>	<u>334,922,364</u>	<u>348,319,258</u>	<u>11%</u>
Subtotal Current Nonsponsored	\$2,386,667,821	\$2,489,173,507	\$2,552,106,445	84%
Sponsored Research	<u>\$447,812,799</u>	<u>\$459,000,000</u>	<u>\$470,000,000</u>	<u>16%</u>
Total Revenue	\$2,834,480,620	\$2,948,173,507	\$3,022,106,445	100.0%

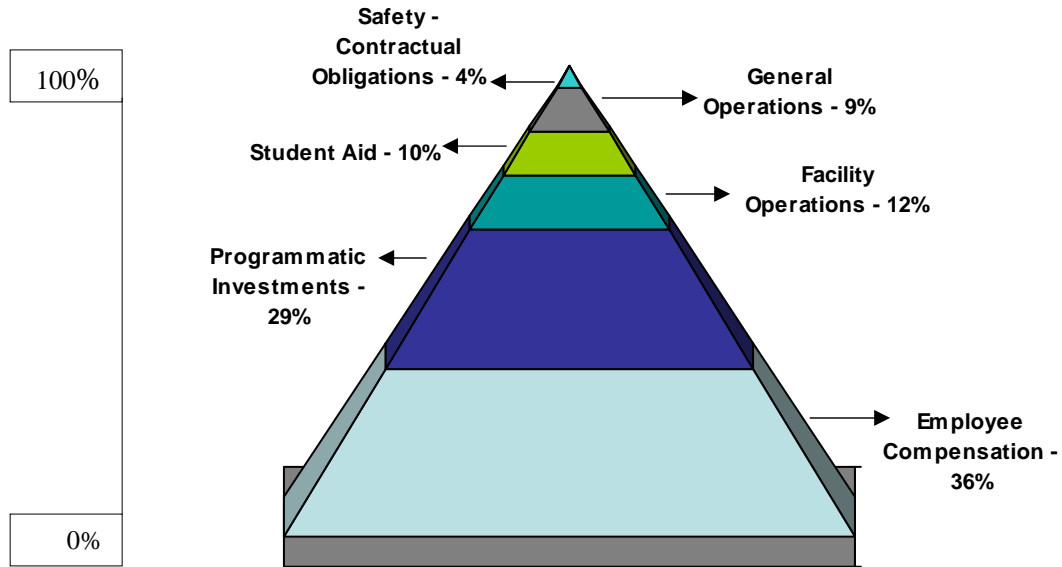
E. Summary - Revised Investment Framework

The incremental investment plan for FY09 has increased from that previously submitted by \$1 million, corresponding to the \$1.1 million increase in the incremental resources available. Within that \$1 million increase, however, are several shifts that should be noted:

- The cost of the Founders Free Tuition Program decreased by \$900,000 from the previous submittal due to the recommended undergraduate tuition rate increase of 7.25% rather than 7.5%, and a change in the Living and Miscellaneous Expense Allowance used in the state grant program calculations.
- Decisions were made to delay approximately \$4 million of previously recommended investments in areas of less critical need.
- The President has decided to address an additional scheduled reduction in the state appropriation for FY10 of \$2,550,000 by implementing budget adjustments in the FY09 budget now. The additional \$2,550,000 scheduled reduction for FY10 is the result of the recent state budget agreement. This means that as we enter the next biennium, the University will not be in a position of needing to implement additional budget cuts to stay within our base appropriation. Those funds are being used for nonrecurring allocations in the investment plan for FY09.
- Finally, additional expense obligations have been incorporated into the budget for external leases and the 21st Century Scholarship matching program.

The majority of the previously submitted investment plan remains unchanged. The total investment framework, including the changes described above and in order of magnitude, is as follows:

Employee Compensation	\$27,800,000	36%
Program and Student Investments	22,900,000	29%
Facility Operations	9,000,000	12%
Student Aid	7,400,000	10%
General Operations	7,300,000	9%
Safety/Contractual Obligations	<u>3,400,000</u>	<u>4%</u>
Total Investments/Challenge	\$77,800,000	100%



The single largest investment in the framework is the commitment to employee compensation increases at \$27.8 million, or over one third of the total. The employee compensation costs, combined with the required investments in facility operations, our core obligations, total roughly half of all the new investments for FY09.

The table below highlights investments associated with the \$22,900,000 of programmatic investments:

Recruitment/Setups/Chairs	\$ 5,691,375
Educational Investments	\$ 4,174,985
Core Academic Support	\$ 8,119,757
Interdisciplinary Investments	\$ 4,949,100

F. Revised Centrally Distributed and Attributed Funds Budget Plan for FY09

Within the context of available resources, the proposed distributions and balances for the centrally distributed and attributed funds are as follows:

Fiscal Year 2008-09 Proposed Distributions Centrally Distributed and Attributed Funds

	<u>O&M</u>	<u>Tuition</u>	<u>State Specials</u>	<u>ICR</u>	<u>Central Reserves</u>	<u>University Fee</u>
Balance Forward	\$4,696,142	\$0	\$0	\$2,415,743	\$22,276,959	\$0
Annual Revenue/ Net Transfers	<u>662,221,986</u>	<u>563,044,244</u>	<u>89,398,700</u>	<u>107,159,697</u>	<u>8,526,897</u>	<u>59,789,696</u>
Total Net Resources	\$666,918,128	\$563,044,244	\$89,398,700	\$109,575,440	\$30,803,856	\$59,789,696
Planned Distributions	\$666,802,636	\$563,044,244	\$89,398,700	\$109,538,697	\$4,805,000	\$59,789,696
Ending Balance	\$115,492	\$0	\$0	\$36,743	\$25,998,856	\$0

Details on specific distributions by campus, college and support unit can be found on the Revised Attachment 10, Fund Forecast – Centrally Distributed and Attributed Funds.

III. Special Issues

A. Student Capital Enhancement Fee

The President’s Revised Operating Budget for Fiscal Year 2008-09 continues to include the establishment of a new student capital enhancement fee for students on the twin cities campus. The purpose of the fee, however, has been narrowed to ensure a reliable revenue stream to support long-term capital financing for recreational sports facilities only.

In addition, the phase in of the fee over a period of five years has been changed, so that the maximum fee per semester will be \$75, rather than \$100 as previously submitted. The revised implementation schedule is as follows:

<u>Academic Year</u>	<u>Per Semester Fee</u>	<u>Paid By</u>
2008-2009	\$ 12.50	Freshmen
2009-2010	\$ 25.00	Freshmen & Sophomores
2010-2011	\$ 40.00	Freshmen, Sophomores, Juniors
2011-2012	\$ 60.00	All Students
2012-2013	\$ 75.00	All Students

By the 2012-2013 academic year the \$75 per semester fee will yield approximately \$5.3 million annually to capitalize long term capital needs totaling \$80,000,000 and also enable the University to leverage increased private support for these important student life projects.

B. Attachments and Original Budget Document

This supplemental budget document for FY09 describes the significant changes made to the President’s recommended Operating Budget for FY09. Any other changes to the budget document submitted in May are minimal and technical in nature.

The following Attachments have been revised to reflect the changes described in this document:

- Attachment 1 – Resource and Expenditure Budget Plan – University Fiscal Page
- Attachment 2 – University of Minnesota 2008-09 Tuition Plan: Tuition Rates
- Attachment 6 – University of Minnesota 2008-09 Tuition Plan: Course Fees
- Attachment 7 – University of Minnesota 2008-09 Tuition Plan: Term Fees
- Attachment 8 – University of Minnesota 2008-09 Tuition Plan: Fees in Lieu of Tuition
- Attachment 10 – Fund Forecast – Centrally Distributed and Attributed Funds
- Attachment 11 – Resolution Related to the Fiscal Year 2008-09 Operating Budget

Attachment 9 – Student Services Fees Summary – is also a part of the budget requiring approval, but remains unchanged from the May submittal and is, therefore, not included with these updated materials.

The original budget document and this supplement, upon approval, will be posted on the budget office web site at www/budget.umn.edu.

Attachment 1 Revised

Resource and Expenditure Budget Plan University Fiscal Page Current Non Sponsored Funds

Excluding Multi Year accounts	Actual 2004-05	Actual 2005-06	Actual 2006-07	Budgeted 2007-08	Budget Plan 2008-09
RESOURCES					
a Carry Forward	\$539,042,096	\$594,935,336	\$570,103,015	\$600,412,354	\$600,759,922
Revenues by Revenue Class					
O & M Appropriations	\$486,700,000	527,824,000	\$556,212,000	\$621,184,000	\$632,070,300
O & M Enterprise Assessment/Fees	9,393,385	10,073,059	10,228,734	14,859,774	15,074,583
State Specials	86,636,507	87,744,000	87,774,000	115,795,000	89,398,700
Tuition/University Fee	436,304,057	496,601,853	525,772,851	585,187,200	622,833,940
ICR	92,060,879	100,414,905	100,153,315	106,527,124	109,538,697
Central Reserves	2,408,178	18,255,314	26,250,000	24,500,000	21,225,000
Auxiliaries	225,942,306	239,667,972	258,554,218	273,762,070	284,712,553
ISO	196,821,981	210,616,809	222,536,154	214,148,322	222,714,255
Other Unrestricted	198,185,419	203,431,021	221,357,370	198,287,653	206,219,159
Restricted	312,845,307	318,349,390	377,829,179	334,922,364	348,319,258
b Total Revenues	\$2,047,298,020	\$2,212,978,324	\$2,386,667,821	\$2,489,173,507	\$2,552,106,445
c Net Transfers	(27,022,325)	(104,540,433)	(67,093,184)	(90,000,000)	(90,000,000)
d TOTAL NET RESOURCES (a+b+c)	\$2,559,317,791	\$2,703,373,227	\$2,889,677,652	\$2,999,585,861	\$3,062,866,367
EXPENDITURES					
Expenditures by Function Type					
Instruction	\$688,851,078	\$744,283,513	\$802,982,144	\$855,532,861	\$889,407,849
Research	45,261,847	46,305,387	48,130,409	42,472,739	44,154,455
Public Service	114,558,661	123,259,409	154,464,687	162,591,641	169,029,488
Academic Support	327,019,206	351,457,764	338,107,006	361,944,909	376,276,187
Student Services	77,006,354	82,988,147	90,465,139	92,814,179	96,489,174
Institutional Support	178,970,010	199,435,154	274,639,969	310,189,701	322,471,722
Operation & Maint. of Plant	237,653,779	272,844,813	229,738,070	247,995,255	257,814,675
Scholarships & Fellowships	115,306,907	116,980,846	133,061,421	102,619,158	106,682,383
Auxiliary Enterprises	179,754,613	195,715,181	217,676,453	222,665,498	231,481,981
TOTAL EXPENDITURES	\$1,964,382,456	\$2,133,270,213	\$2,289,265,298	\$2,398,825,939	\$2,493,807,916
Expenditures by Object Class					
Salaries	\$919,345,029	\$990,418,118	\$1,061,771,021	\$1,137,402,347	\$1,182,898,441
Fringe Benefits	\$275,042,510	\$309,097,832	\$326,482,947	\$362,485,105	\$380,609,360
Student Aid	\$120,721,205	\$123,442,412	\$141,257,550	\$109,836,817	\$117,525,394
Consultant/Purchased Person.	\$77,630,825	\$90,219,477	\$89,743,461	\$102,212,481	\$105,278,856
Communications	\$37,990,428	\$39,028,960	\$39,388,039	\$33,408,267	\$34,410,515
Supplies, Serv, & Misc. Exp.	\$219,980,764	\$245,842,019	\$268,218,515	\$283,532,851	\$292,038,837
Materials for Resale	\$57,676,501	\$60,284,345	66,016,980	\$67,258,316	\$69,276,065
Equipment & Other Capital Assets	\$45,620,692	\$49,457,118	\$46,840,010	\$49,382,629	\$50,864,108
Rents, & Leases	\$23,393,763	\$23,816,226	\$25,055,576	\$27,201,693	\$28,017,744
Repairs, Maintenance & Supplies	\$63,716,966	\$61,871,604	\$63,988,559	\$66,157,028	\$68,141,739
Utilities	\$113,144,788	\$128,751,631	148,580,362	\$146,933,250	\$151,341,247
Plant Activity			596,721	\$1,346,733	\$1,387,135
Loan Activity	(\$307,868)	(\$312,474)	(\$327,199)	\$64,000	\$65,920
ICR/Subcontracts/Participants	\$1,033,466	\$1,279,885	\$845,095	\$365,641	\$376,610
Enterprise Assessment	\$9,393,385	\$10,073,059	\$10,807,662	\$11,238,782	\$11,575,946
e TOTAL EXPENDITURES	\$1,964,382,455	\$2,133,270,212	\$2,289,265,298	\$2,398,825,939	\$2,493,807,916
ENDING BALANCE (d-e)	\$594,935,336	\$570,103,015	\$600,412,354	\$600,759,922	\$569,058,451

Attachment 2 - Revised

University of Minnesota 2008-09 Tuition Plan: Tuition Rates

2008-09 Tuition Schedule: June Board Approval

	2007-08 Semester Rates		2008-09 Semester Rates		2007-08 U Fee	2008-09 U Fee	Tuition/U Fee Percentage Increase
	Resident	Nonresident	Resident	Nonresident	Resident	Nonresident	
Twin Cities							
Undergraduate							
Per Credit	\$305.77	\$753.08	\$326.92	\$774.23	\$50.00	\$55.00	7.35%
13-Credit Band	\$3,975.00	\$9,790.00	\$4,250.00	\$10,065.00	\$500.00	\$550.00	7.26%
Undergraduate Fall 2008 or Later							
Per Credit				\$480.77		\$55.00	na
13-Credit Band				\$6,250.00		\$550.00	na
Graduate School General Programs							
Part-time rates							
per credit	\$811.67	\$1,403.17	\$870.50	\$1,462.00	\$50.00	\$55.00	7.4%
Full-time rates							
6-14 Credits	\$4,870.00	\$8,419.00	\$5,223.00	\$8,772.00	\$500.00	\$550.00	7.5%
Each Credit over 14	\$811.67	\$1,403.17	\$870.50	\$1,462.00	\$50.00	\$55.00	7.4%
Architecture & Landscape Arch							
Per Credit	\$656.67	\$1,090.83	\$705.92	\$1,090.83	\$50.00	\$55.00	7.7%
12-17 Credits	\$7,880.00	\$13,090.00	\$8,471.00	\$13,090.00	\$500.00	\$550.00	7.6%
Each Credit over 17	\$656.67	\$1,090.83	\$705.92	\$1,090.83	\$50.00	\$55.00	7.7%
CBS -- Professional Masters							
Per Credit	\$1,223.00	\$1,223.00	\$1,314.00	\$1,314.00	\$50.00	\$55.00	7.5%
CLA -- Master of Geographical Information System							
Part-time rates							
Per credit	\$848.67	\$1,467.17	\$910.17	\$1,528.67	\$50.00	\$55.00	7.4%
Full-time rates							
6-14 Credits	\$5,092.00	\$8,803.00	\$5,461.00	\$9,172.00	\$500.00	\$550.00	7.5%
Each Credit over 14	\$848.67	\$1,467.17	\$910.17	\$1,528.67	\$50.00	\$55.00	7.4%
Humphrey Institutes Masters							
Per Credit	\$935.83	\$1,526.00	\$1,004.00	\$1,594.17	\$50.00	\$55.00	7.4%
6-15 Credits	\$5,615.00	\$9,156.00	\$6,024.00	\$9,565.00	\$500.00	\$550.00	7.5%
Each Credit over 15	\$935.83	\$1,526.00	\$1,004.00	\$1,594.17	\$50.00	\$55.00	7.4%
MPA Per Credit	\$813.00	\$1,404.00	\$873.00	\$1,464.00	\$50.00	\$55.00	7.5%
Housing Studies Certificate	\$545.00		\$585.00	\$585.00	\$50.00	\$55.00	7.6%
Management of Technology Masters							
First Year	\$14,000.00	\$14,000.00	\$15,030.00	\$15,030.00	\$500.00	\$550.00	7.4%
Second Year	\$13,400.00	\$13,400.00	\$14,150.00	\$14,150.00	\$500.00	\$550.00	5.8%
Per Credit (special circumstances)	\$1,513.00	\$1,513.00	\$1,625.00	\$1,625.00	\$50.00	\$55.00	7.5%
Software Engineering Masters							
First Year	\$6,510.00	\$6,510.00	\$6,760.00	\$6,760.00	\$500.00	\$550.00	4.3%
Second Year (continuing)	\$6,160.00	\$6,160.00	\$6,510.00	\$6,510.00	\$500.00	\$550.00	6.0%
Infrastructure Systems Eng Masters							
First Year	\$6,850.00	\$6,850.00	\$6,225.00	\$6,225.00	\$500.00	\$550.00	-7.8%
Second Year	\$5,700.00	\$5,700.00	\$6,000.00	\$6,000.00	\$500.00	\$550.00	5.6%
Third Year	\$5,550.00	\$5,550.00	\$5,700.00	\$5,700.00	\$500.00	\$550.00	3.3%
Per Credit (special circumstances)	\$795.00	\$795.00	\$830.00	\$830.00	\$50.00	\$55.00	4.7%
Master of Financial Mathematics	\$500.00	\$500.00	\$600.00	\$600.00	\$50.00	\$55.00	19.1%
Professional Schools							
Carlson School of Management							
Industrial Relations Masters Day Program							
Per Credit	\$803.60	\$1,171.90	\$863.90	\$1,259.80	\$50.00	\$55.00	7.6%
10-15 Credits	\$6,125.00	\$11,175.00	\$6,585.00	\$12,012.50	\$500.00	\$550.00	7.7%

Attachment 2 - Revised

University of Minnesota 2008-09 Tuition Plan: Tuition Rates

2008-09 Tuition Schedule: June Board Approval

	2007-08 Semester Rates		2008-09 Semester Rates		2007-08 U Fee	2008-09 U Fee	Tuition/U Fee Percentage Increase
	Resident	Nonresident	Resident	Nonresident	Resident	Nonresident	
Twin Cities							
Industrial Relations Masters Evening Program							
Per Credit	\$695.00	\$1,012.00	\$725.00	\$1,056.00	\$50.00	\$55.00	4.7%
M.B.A. Day Program							
Entering Students (guaranteed two-year rates)							
Per Credit	\$992.40	\$1,412.80	\$1,068.67	\$1,518.75	\$50.00	\$55.00	7.6%
12-19 Credits	\$11,909.00	\$16,953.50	\$12,800.00	\$18,225.00	\$500.00	\$550.00	7.6%
Continuing Students							
Per Credit	\$945.20	\$1,345.50	\$992.40	\$1,412.80	\$50.00	\$55.00	5.2%
12-19 Credits	\$11,342.00	\$16,145.50	\$11,909.00	\$16,953.50	\$500.00	\$550.00	5.2%
M.B.A. Evening Program							
Per Credit (1-11)	\$945.00	\$945.00	\$1,015.00	\$1,015.00	\$50.00	\$55.00	7.5%
12 or more Per Credit	\$945.00	\$1,365.00	\$1,015.00	\$1,470.00	\$50.00	\$55.00	7.5%
M.B.T. Program							
Per Credit (1-11)	\$945.00	\$945.00	\$1,015.00	\$1,015.00	\$50.00	\$55.00	7.5%
12 or more Per Credit	\$945.00	\$1,365.00	\$1,015.00	\$1,470.00	\$50.00	\$55.00	7.5%
Master of Accounting							
Per Credit (1-9)	\$628.80	\$943.20	\$680.00	\$1,015.00	\$50.00	\$55.00	8.3%
10-18 Credits	\$6,288.00	\$9,432.00	\$6,800.00	\$10,150.00	\$500.00	\$550.00	8.3%
Executive MBA							
Entering Students (guaranteed 2 yr rate)	\$20,625.00	\$20,625.00	\$22,162.50	\$22,162.50	\$500.00	\$550.00	7.5%
Continuing Students	\$18,750.00	\$18,750.00	\$20,625.00	\$20,625.00	\$500.00	\$550.00	10.0%
Dentistry, School of							
Resident and Nonresident							
Semester	\$10,338.19	\$18,164.19	\$11,114.00	\$19,799.00	\$500.00	\$550.00	7.6%
Summer Term	\$5,528.05	\$9,713.28	\$5,943.00	\$10,587.00	\$500.00	\$550.00	7.7%
Program Completion (per credit)	\$413.82	\$727.32	\$445.00	\$793.00	\$50.00	\$55.00	7.8%
North Dakota Reciprocity							
Semester	\$13,623.67		\$14,646.00		\$500.00	\$550.00	7.6%
Summer Term	\$7,284.70		\$7,831.00		\$500.00	\$550.00	7.7%
Program Completion (per credit)	\$545.49		\$586.00		\$50.00	\$55.00	7.6%
PASS							
Semester - Year 1	\$23,328.00		\$25,078.00		\$500.00	\$550.00	7.6%
Summer Term - Year 1	\$14,898.00		\$16,015.00		\$500.00	\$550.00	7.6%
Semester - Year 2	\$22,114.50		\$23,773.00		\$500.00	\$550.00	7.6%
Summer Term - Year 2	\$11,718.00		\$12,597.00		\$500.00	\$550.00	7.6%
Program Completion (per credit)	\$727.32		\$782.00		\$50.00	\$55.00	7.7%
Departmental Masters and Post-baccalaureate Certificates							
Per Credit	\$388.25	\$670.25	\$416.33	\$698.33	\$50.00	\$55.00	7.5%
12 - 18 Credit plateau	\$4,659.00	\$8,043.00	\$4,996.00	\$8,380.00	\$500.00	\$550.00	7.5%
Law School							
Per Credit	\$833.33	\$1,229.17	\$912.50	\$1,345.96	\$50.00	\$55.00	9.5%
Term (12 or more Credits)	\$10,000.00	\$14,750.00	\$10,950.00	\$16,151.50	\$500.00	\$550.00	9.5%
LLM / per Credit	\$1,270.83	\$1,270.83	\$1,391.58	\$1,391.58	\$50.00	\$55.00	9.5%
LLM / term (12 or more Credits)	\$15,250.00	\$15,250.00	\$16,699.00	\$16,699.00	\$500.00	\$550.00	9.5%
Medical School (TC & UMD)							
1st year students							
Per term including summer	\$9,409.00	\$11,847.00	\$9,691.00	\$12,202.00	\$500.00	\$550.00	3.4%
2nd year students							
Per term including summer	\$9,135.00	\$11,502.00	\$9,409.00	\$11,847.00	\$500.00	\$550.00	3.4%
3rd year students							
Per term including summer	\$8,869.00	\$11,167.33	\$9,135.00	\$11,502.00	\$500.00	\$550.00	3.4%
4th year students							
Per term including summer	\$8,611.00	\$10,909.00	\$8,869.00	\$11,167.00	\$500.00	\$550.00	3.4%

Attachment 2 - Revised

University of Minnesota 2008-09 Tuition Plan: Tuition Rates

2008-09 Tuition Schedule: June Board Approval

	2007-08 Semester Rates		2008-09 Semester Rates		2007-08 U Fee	2008-09 U Fee	Tuition/U Fee Percentage Increase
	Resident	Nonresident	Resident	Nonresident	Resident	Nonresident	
Twin Cities							
Completion							
Per term including summer	\$6,722.00	\$12,317.00	\$6,924.00	\$12,687.00	\$500.00	\$550.00	3.5%
Medical fellow specialists residency program							
Per term including summer	\$0.00	\$0.00	\$0.00	\$0.00	\$50.00	\$55.00	
Psychology fellow specialists							
Per term including summer	\$0.00	\$0.00	\$0.00	\$0.00	\$50.00	\$55.00	
Physical Therapy (DPT)	\$5,730.00	\$9,815.00	\$6,147.00	\$10,232.00	\$500.00	\$550.00	7.5%
Physical Therapy (DPT) Transitional Program							
Part-time rates							
per credit	\$811.67	\$1,403.33	\$870.50	\$1,462.17	\$50.00	\$55.00	7.4%
Full-time rates							
6-14 Credits	\$4,870.00	\$8,420.00	\$5,223.00	\$8,773.00	\$500.00	\$550.00	7.5%
Each Credit over 14	\$811.67	\$1,403.33	\$870.50	\$1,462.17	\$50.00	\$55.00	7.4%
Nursing							
Doctor of Nursing Practice (DNP)							
Per credit	\$602.00	\$977.00	\$646.00	\$1,021.00	\$50.00	\$55.00	7.5%
Master of Nursing (MN)							
Per credit	\$419.00	\$684.00	\$449.00	\$714.00	\$50.00	\$55.00	7.5%
College of Pharmacy (TC & UMD)							
Per Credit	\$666.67	\$1,141.17	\$715.67	\$1,190.17	\$50.00	\$55.00	7.5%
Term (12 or more Credits)	\$8,000.00	\$13,694.00	\$8,588.00	\$14,282.00	\$500.00	\$550.00	7.5%
Public Health, School of							
Per Credit (semester)	\$526.00	\$764.00	\$565.00	\$764.00	\$50.00	\$55.00	7.6%
Per Credit (summer)	\$526.00	\$526.00	\$565.00	\$565.00	\$50.00	\$55.00	7.6%
Healthcare Administration Masters							
Per Credit	\$857.00	\$857.00	\$921.00	\$921.00	\$50.00	\$55.00	7.6%
Per Credit (day and 99PRD)	\$526.00	\$764.00	\$565.00	\$764.00	\$50.00	\$55.00	7.6%
Veterinary Medicine, College of							
Per Credit	\$799.96	\$1,577.38	\$858.92	\$1,636.33	\$50.00	\$55.00	7.5%
Term (12 or more Credits)	\$9,599.50	\$18,928.50	\$10,307.00	\$19,636.00	\$500.00	\$550.00	7.5%
Duluth							
Undergraduate							
Per Credit	\$296.15	\$666.40	\$316.54	\$686.77	\$50.00	\$55.00	7.33%
13-Credit Band	\$3,850.00	\$8,663.25	\$4,115.00	\$8,928.00	\$500.00	\$550.00	7.24%
Undergraduate Fall 2008 or Later							
Per Credit				\$393.46		\$55.00	na
13-Credit Band				\$5,115.00		\$550.00	na
Graduate School General Programs: Same as Twin Cities							
Medical School: Same as Twin Cities							
School of Pharmacy: Same as Twin Cities							
Departmental Masters and Post-baccalaureate Certificates							
Per Credit	\$386.00	\$696.75	\$414.00	\$724.00	\$50.00	\$55.00	7.6%
MBA							
(degree and non-degree seeking students)							
Per Credit	\$773.00	\$773.00	\$830.00	\$830.00	\$50.00	\$55.00	7.5%
Rochester MBA	\$895.00	\$895.00	\$961.00	\$961.00	\$50.00	\$55.00	7.5%

Attachment 2 - Revised

University of Minnesota 2008-09 Tuition Plan: Tuition Rates

2008-09 Tuition Schedule: June Board Approval

	2007-08 Semester Rates		2008-09 Semester Rates		2007-08 U Fee		2008-09 U Fee		Tuition/U Fee Percentage Increase
	Resident	Nonresident	Resident	Nonresident	Resident	Nonresident	Resident	Nonresident	
Twin Cities									
Morris									
Undergraduate									
Per Credit	\$296.15	\$296.15	\$316.54	\$316.54	\$50.00	\$55.00			7.33%
13-Credit Band	\$3,850.00	\$3,850.00	\$4,115.00	\$4,115.00	\$500.00	\$550.00			7.24%
Crookston									
Undergraduate									
Per Credit	\$248.00	\$248.00	\$264.92	\$264.92	\$50.00	\$55.00			7.36%
13-Credit Band	\$3,224.00	\$3,224.00	\$3,444.00	\$3,444.00	\$500.00	\$550.00			7.25%

Attachment 6 - Revised
University of Minnesota 2008-09 tuition Plan: Course Fees - Per Semester

Campus/College	Class Name	Fee Purpose	Type	2008 Amount	2009 Amount	Percent Change
Crookston	ANSC 1004 Intro to Animal Sci	Transportation/field trip	Flat	\$10.00	\$10.00	0.00 %
Crookston	ANSC 3203 Animal Anat/Physiol	Consumable materials	Flat	\$25.00	\$25.00	0.00 %
Crookston	ART 1352 Art Design & Tech	Consumable materials	Flat	\$65.00	\$65.00	0.00 %
Crookston	ART 2000 Elementary Art	Consumable materials	Flat	\$60.00	\$60.00	0.00 %
Crookston	ASM 1034 Facility Maintenance/Safety	Consumable materials	Flat	\$25.00	\$25.00	0.00 %
Crookston	ASM 2043 Welding/Manufacturing Proc	Consumable materials	Flat	\$30.00	\$30.00	0.00 %
Crookston	BIOL 1009 General Biology	Consumable materials	Flat	\$20.00	\$20.00	0.00 %
Crookston	BIOL 2103, 2104, 2012, BIOL 2022, BIOL 2032	Consumable materials	Flat	\$30.00	\$30.00	0.00 %
Crookston	BIOL 3022, 3027, 3131, 3140	Consumable materials	Flat	\$40.00	\$40.00	0.00 %
Crookston	BIOL 3464 Mammalogy	Consumable materials	Flat	\$78.00	\$78.00	0.00 %
Crookston	BIOL 3466 Ornithology	Consumable materials	Flat	\$43.00	\$43.00	0.00 %
Crookston	BIOL 3720, 3722, 3822	Consumable materials	Flat	\$40.00	\$40.00	0.00 %
Crookston	Various courses - On-Line Course Fee	Demand for service	Per Credit	\$15.00	\$30.00	100.00 %
Crookston	CA 2190 Topics in Computer Applicatns	Consumable materials	Per Credit	\$75.00	\$75.00	0.00 %
Crookston	CHEM 1001, 1021, 1011, 1401	Consumable materials	Flat	\$20.00	\$20.00	0.00 %
Crookston	CHEM 2310/2311 Elem Organic Chem Lab I/II	Consumable materials	Flat	\$30.00	\$30.00	0.00 %
Crookston	ECE 3410 Lrng Envirn Infants/Toddler	Consumable materials	Flat	\$35.00	\$35.00	0.00 %
Crookston	ECE 4700/4702 Dev Approp Preprimary Educ I/II	Consumable materials	Flat	\$17.50	\$17.50	0.00 %
Crookston	ESL 100, 120, 130, 210, 220, 230, 310, 320	Demand for service	Flat	\$168.00	\$168.00	0.00 %
Crookston	GEOL 1001 Introductory Geology	Consumable materials	Flat	\$20.00	\$20.00	0.00 %
Crookston	HLTH 1062 First Aid/CPR	Demand for service	Flat	\$6.00	\$6.00	0.00 %
Crookston	HORT 1021 Woody Plant MatrIs	Transportation/field trip	Flat	\$30.00	\$30.00	0.00 %
Crookston	HORT 1092 Floral Design	Consumable materials	Flat	\$30.00	\$30.00	0.00 %
Crookston	HORT 1093 Adv Floral Dsgn/Floral Oper	Consumable materials	Flat	\$35.00	\$35.00	0.00 %
Crookston	HORT 3036 Plant Propagation	Consumable materials	Flat	\$20.00	\$20.00	0.00 %
Crookston	HRI 1111 Intro to Foods	Consumable materials	Flat	\$25.00	\$25.00	0.00 %
Crookston	MUS 1041& 3041 Priv Music Instr	Demand for service	Flat	\$25.00	\$25.00	0.00 %
Crookston	NATR 1244 Elements of Forestry	Consumable materials	Flat	\$35.00	\$35.00	0.00 %
Crookston	NATR 1663 & 2573	Consumable materials	Flat	\$32.00	\$32.00	0.00 %
Crookston	NATR 3203 Park/Rec Mgmt	Transportation/field trip	Flat	\$18.00	\$18.00	0.00 %
Crookston	NATR 3374 Ecology	Consumable materials	Flat	\$12.00	\$12.00	0.00 %
Crookston	NATR 3464 Mammalogy	Consumable materials	Flat	\$78.00	\$78.00	0.00 %
Crookston	NATR 3466 Ornithology	Consumable materials	Flat	\$43.00	\$43.00	0.00 %
Crookston	NATR 3654 Wildlife Ecol/Mgmt	Consumable materials	Flat	\$24.00	\$24.00	0.00 %
Crookston	PHYS 1012 , 1101, 1102 various Physics	Consumable materials	Flat	\$20.00	\$20.00	0.00 %
Crookston	PIM 2573 Entomology	Consumable materials	Flat	\$32.00	\$32.00	0.00 %
Duluth	Various courses - Applied Music Lesson fee-non-music majors	Demand for service	Flat	\$235.00	\$242.00	2.98 %
Duluth	Various courses - Applied Music-flat fee for music majors	Demand for service	Flat	\$60.00	\$63.00	5.00 %
Duluth	Various courses - Applied Music Lesson fee- music majors- additional per credit	Demand for service	Per Credit	\$55.00	\$55.00	0.00 %
Duluth	Various courses - Use of locker room/towel fee	Demand for service	Flat	\$7.65	\$7.88	3.01 %
Duluth	Various courses - Computer Full Lab Access Fee	Demand for service	Flat	\$66.15	\$68.13	2.99 %
Duluth	Various courses - Computer Network Access Fee	Demand for service	Per Credit	\$4.65	\$5.56	19.57 %
Duluth	Various courses - FST Application Fee	Demand for service	Flat	\$100.00	\$100.00	0.00 %
Duluth	Various courses - Recreation Course Fee	Demand for service	Flat	36.82	\$37.93	3.01%
Duluth	CC 3117 Functional Anatomy, Sport Inj	Consumable materials	Flat	\$15.00	\$15.45	3.00 %
Duluth	COMM 2929 Intercultural Comm	Transportation/field trip	Flat	New Fee	\$80.00	New Fee
Duluth	ENED 3310 Outdoor Leadership Field Exper	Demand for service	Flat	\$257.50	\$265.23	3.00 %
Duluth	ENED 3331 Org of Environment Ed Centers	Demand for service	Flat	\$25.00	\$25.75	3.00 %
Duluth	ENED 4163 Outdoor Education Methods	Demand for service	Flat	\$73.15	\$75.35	3.01 %
Duluth	ENED 4410 Ropes Course Management	Demand for service	Flat	\$168.78	\$173.85	3.00 %
Duluth	ENED 4555 Foundations Environmental Educ	Transportation/field trip	Flat	\$20.00	\$20.60	3.00 %
Duluth	ENED 4601 Wilderness Philosophy	Transportation/field trip	Flat	\$15.45	\$15.92	3.04 %
Duluth	ENED 5163 Outdoor Education Methods	Transportation/field trip	Flat	\$73.15	\$75.35	3.01 %
Duluth	ENED 5343 Adv Field Interpretive Tech	Transportation/field trip	Flat	\$318.27	\$327.82	3.00 %
Duluth	ENED 5495 EnEd Special Topics:	Transportation/field trip	Flat	New Fee	\$350.00	New Fee
Duluth	GEOG 4451 Geography of Soils	Transportation/field trip	Flat	New Fee	\$85.00	New Fee
Duluth	GEOG 5612 Field Techniques	Transportation/field trip	Flat	New Fee	\$160.00	New Fee
Duluth	GEOL 1045 Fr. Sem: MN's Geologic History	Transportation/field trip	Flat	\$60.00	\$61.80	3.00 %
Duluth	GEOL 2110 Earth History	Transportation/field trip	Flat	\$25.75	\$26.53	3.03 %
Duluth	GEOL 2311 Mineralogy & GEOL 2312 Petrology	Transportation/field trip	Flat	\$41.20	\$42.44	3.01 %
Duluth	GEOL 3210 Geomorphology	Transportation/field trip	Flat	New Fee	\$20.00	New Fee
Duluth	GEOL 3420 Sedimentology and Stratigraphy	Transportation/field trip	Flat	\$56.65	\$58.35	3.00 %
Duluth	GEOL 3540 Geologic Field Methods	Transportation/field trip	Flat	\$30.90	\$31.83	3.01 %
Duluth	GEOL 4350 Economic Geology	Transportation/field trip	Flat	\$103.00	\$106.09	3.00 %
Duluth	GEOL 4450 Structural Geology	Transportation/field trip	Flat	\$41.20	\$42.44	3.01 %
Duluth	GEOL 5260 Fluvial Geomorphology	Transportation/field trip	Flat	New Fee	\$30.00	New Fee
Duluth	GEOL 5440 Deposit Envir, Stratal Arch I	Transportation/field trip	Flat	\$206.00	\$212.18	3.00 %
Duluth	GEOL 5450 Advanced Structure	Transportation/field trip	Flat	\$30.90	\$31.83	3.01 %
Duluth	MU 1901 Music Technology	Demand for service	Flat	\$20.00	\$20.00	0.00 %

Attachment 6 - Revised
University of Minnesota 2008-09 tuition Plan: Course Fees - Per Semester

Campus/College	Class Name	Fee Purpose	Type	2008 Amount	2009 Amount	Percent Change
Duluth	MU 8301 Grad Maj Instr & MU 8701 Grad Applied Conducting	Demand for service	Per Credit	\$115.00	\$118.00	2.61 %
Duluth	MU 8302 Grad Sec Instr	Demand for service	Flat	\$235.00	\$242.00	2.98 %
Duluth	PE 1414 Bowling	Demand for service	Flat	\$52.50	\$54.08	3.01 %
Duluth	PE 1500 Cross-Country Ski	Demand for service	Flat	\$38.25	\$39.40	3.01 %
Duluth	PE 1502 Alpine Ski	Demand for service	Flat	\$94.80	\$97.65	3.01 %
Duluth	PE 1506 Sailing	Demand for service	Flat	\$76.39	\$78.69	3.01 %
Duluth	PE 1507 Introduction to River Kayaking	Demand for service	Flat	\$38.25	\$39.40	3.01 %
Duluth	PE 1508 Flat Canoe	Demand for service	Flat	\$23.87	\$24.59	3.02 %
Duluth	PE 1510 Whitewater Kayaking	Demand for service	Flat	\$49.12	\$50.60	3.01 %
Duluth	PE 1511 Sea Kayaking	Demand for service	Flat	\$47.75	\$49.19	3.02 %
Duluth	PE 1530 Rock Climbing	Demand for service	Flat	\$36.98	\$38.09	3.00 %
Duluth	PEP 3520 Alpine Ski Instr	Demand for service	Flat	\$94.80	\$97.65	3.01 %
Duluth	REC 2300 Rec Prog	Consumable materials	Flat	\$15.45	\$15.92	3.04 %
Duluth	SOC 3841 Urban Justice Tour	Transportation/field trip	Flat	New Fee	\$400.00	New Fee
Duluth	SPED 4204 & SPED 5204 Assess Children Disabilities	Demand for service	Flat	\$27.32	\$28.14	3.00 %
Morris	ARTS 1002 Digitally Assisted Design	Consumable materials	Flat	\$20.00	\$20.00	0.00 %
Morris	ARTS 1039, ARTS 1040, ARTS 1500	Consumable materials	Flat	\$55.00	\$55.00	0.00 %
Morris	Various courses - Private Music Lesson Fee	Demand for service	Flat	\$350.00	\$350.00	0.00 %
Morris	Various courses - Studio Art Materials Fee	Consumable materials	Flat	\$15.00	\$15.00	0.00 %
Morris	Various courses - Studio Art Materials Fee	Consumable materials	Flat	\$25.00	\$25.00	0.00 %
Morris	Various courses - Studio Art Materials Fee	Consumable materials	Flat	\$30.00	\$30.00	0.00 %
Morris	Various courses - Studio Art Materials Fee	Consumable materials	Flat	\$40.00	\$40.00	0.00 %
Morris	Various courses - Studio Art Materials Fee	Consumable materials	Flat	\$55.00	\$55.00	0.00 %
Morris	ELED 4112 Prac IV: Exp Elem School	Transportation/field trip	Flat	\$300.00	\$300.00	0.00 %
Morris	GEOL 2301 Geology of Minnesota	Consumable materials	Flat	\$30.00	\$30.00	0.00 %
Twin Cities						
Academic Health Center	Various courses - Lab Microscope Fee	Demand for service	Flat	\$15.00	\$15.00	0.00 %
Academic Health Center	Various courses - Lab Microscope Fee	Demand for service	Flat	\$30.00	\$30.00	0.00 %
Academic Health Center	Various courses - Lab Consumables	Consumable materials	Flat	New Fee	\$25.00	New Fee
Academic Health Center	Various courses - Lab Consumables	Consumable materials	Flat	New Fee	\$50.00	New Fee
Academic Health Center	Various courses - Lab Consumables	Consumable materials	Flat	New Fee	\$75.00	New Fee
Academic Health Center	Various courses - Lab Consumables	Consumable materials	Flat	\$85.00	\$85.00	0.00 %
Academic Health Center	CSPH 5331 Shamanism & Shamanic Healing	Demand for service	Flat	\$300.00	\$150.00	-50.00 %
Academic Health Center	CSPH 5405 Plants in Human Affairs	Transportation/field trip	Flat	\$2,200.00	\$2,200.00	0.00 %
Academic Health Center	CSPH 5522 & 5523 - Therapeutic Horticulture	Consumable materials	Flat	\$35.00	\$35.00	0.00 %
Academic Health Center	OT 6100 Pub and Prof Engagement I	Consumable materials	Flat	\$20.00	\$40.00	100.00 %
Academic Health Center	OT 6102 Professional Identity	Consumable materials	Flat	\$30.00	\$30.00	0.00 %
Academic Health Center	OT 6111 Occupations as Therapy	Consumable materials	Flat	\$75.00	\$75.00	0.00 %
Academic Health Center	OT 6200 Public & Prof. Engagement II	Consumable materials	Flat	New Fee	\$20.00	New Fee
Academic Health Center	OT 6201 Functional Anatomy/Kinesiology	Consumable materials	Flat	\$150.00	\$150.00	0.00 %
Academic Health Center	OT 6202 OTPI: Compensation	Consumable materials	Flat	\$25.00	\$30.00	20.00 %
Academic Health Center	OT 6402 OTPI: Neurorehab. Approaches	Consumable materials	Flat	New Fee	\$35.00	New Fee
Academic Health Center	OT 6412 OTPI: Orthotics & Prosthetics	Consumable materials	Flat	New Fee	\$100.00	New Fee
Academic Health Center	OT 6422 OTP: Group Context	Consumable materials	Flat	New Fee	\$15.00	New Fee
College of Design	ARCH 1281 & ARCH 2281 - Design Fundamentals I & II	Consumable materials	Flat	\$50.00	\$50.00	0.00 %
College of Design	ARCH 2301 Intro Arch Drawing	Consumable materials	Flat	New Fee	\$20.00	New Fee
College of Design	ARCH 3150 Topics in Architecture:	Consumable materials	Flat	New Fee	\$50.00	New Fee
College of Design	ARCH 3351, 3381, 3611	Demand for service	Flat	\$100.00	\$100.00	0.00 %
College of Design	ARCH 4321, 4511, 5321	Consumable materials	Flat	\$30.00	\$30.00	0.00 %
College of Design	ARCH 5361, 5381, 5382	Demand for service	Flat	\$100.00	\$100.00	0.00 %
College of Design	ARCH 8253 Grad Arch Dsgn II	Transportation/field trip	Flat	\$350.00	\$375.00	7.14 %
College of Design	Various courses - Blanket fee for Clothing Studios	Consumable materials	Flat	New Fee	\$25.00	New Fee
College of Design	Various courses - Blanket fee for Arch 1701 & 1701 Honors	Transportation/field trip	Flat	New Fee	\$15.00	New Fee
College of Design	Various courses - Blanket fee for Arch 5511 and Arch 5512	Transportation/field trip	Flat	New Fee	\$25.00	New Fee
College of Design	Various courses - Fee for Arch 4432/5432 Modern Architecture	Transportation/field trip	Flat	New Fee	\$25.00	New Fee
College of Design	DHA 1221 Clothing Assembly	Consumable materials	Flat	\$35.00	\$40.00	14.29 %
College of Design	DHA 1311 Fnd I: Dwg & Dsgn	Consumable materials	Flat	\$25.00	\$25.00	0.00 %
College of Design	DHA 1601 & 1602 - ID Studio I & II	Consumable materials	Flat	\$10.00	\$10.00	0.00 %
College of Design	DHA 2213 Textile Analysis	Consumable materials	Flat	\$20.00	\$20.00	0.00 %
College of Design	DHA 2214 Softlines Analysis	Consumable materials	Flat	\$15.00	\$15.00	0.00 %
College of Design	DHA 2311, 2345	Consumable materials	Flat	\$25.00	\$25.00	0.00 %
College of Design	DHA 2351 Graphic Design I	Consumable materials	Flat	\$70.00	\$70.00	0.00 %
College of Design	DHA 2603, 2604, 3217	Consumable materials	Flat	\$10.00	\$10.00	0.00 %
College of Design	DHA 3312 Color and Form	Consumable materials	Flat	\$65.00	\$65.00	0.00 %
College of Design	DHA 3605 & 3606 - ID Studio V and VI	Consumable materials	Flat	\$10.00	\$10.00	0.00 %
College of Design	DHA 4330 Surface Fabric	Consumable materials	Flat	\$65.00	\$65.00	0.00 %

Attachment 6 - Revised
University of Minnesota 2008-09 tuition Plan: Course Fees - Per Semester

Campus/College	Class Name	Fee Purpose	Type	2008 Amount	2009 Amount	Percent Change
College of Design	DHA 4340 Fiber Dsgn Workshop	Consumable materials	Flat	\$40.00	\$40.00	0.00 %
College of Design	DHA 4351 Photography	Consumable materials	Flat	\$35.00	\$40.00	14.29 %
College of Design	DHA 4352 Bookmaking	Consumable materials	Flat	\$20.00	\$20.00	0.00 %
College of Design	DHA 5215 Product Development	Consumable materials	Flat	\$25.00	\$30.00	20.00 %
College of Design	LA 3501 Env Des: Biol/Phys Context	Demand for service	Flat	\$100.00	\$100.00	0.00 %
College of Design	LA 5202 Landscape Analysis Workshop	Transportation/field trip	Flat	\$350.00	\$425.00	21.43 %
College of Design	LA 5203, LA 8203, LA 8205, LA 8404	Transportation/field trip	Flat	\$120.00	\$120.00	0.00 %
College of Design	LA 5372 & LA 8574	Demand for service	Flat	\$100.00	\$100.00	0.00 %
College of Biological Sciences	BIOL 1020 Biology Colloquium	Transportation/field trip	Flat	New Fee	\$5.00	New Fee
College of Biological Sciences	BIOL 1805 Nature of Life	Transportation/field trip	Flat	\$230.00	\$250.00	8.70 %
College of Biological Sciences	BIOL 2002, BIOL 2002H & BIOL 2003 - Foundations of Biology I and II	Demand for service	Flat	\$25.00	\$25.00	0.00 %
College of Biological Sciences	BIOL 2002 Foundations of Biology I	Transportation/field trip	Flat	\$3.50	\$6.00	71.43 %
College of Biological Sciences	BIOL 2032 General Microbiology w/Lab	Consumable materials	Flat	\$80.00	\$82.50	3.13 %
College of Biological Sciences	Various courses - CBS Lab Consumables Fee	Consumable materials	Flat	\$80.00	\$82.50	3.13 %
College of Biological Sciences	Various courses - CBS Recreation Fee	Demand for service	Flat	\$8.00	\$8.25	3.13 %
College of Biological Sciences	GCD 6103 Human Histology	Demand for service	Flat	\$50.00	\$50.00	0.00 %
College of Biological Sciences	PBIO 4321 Minnesota Flora	Transportation/field trip	Flat	\$15.00	\$15.50	3.33 %
College of Biological Sciences	PBIO 4511 Flowering Plant Diversity	Transportation/field trip	Flat	\$23.00	\$23.50	2.17 %
College of Ed/Human Dev	EPSY 8403 Soc/CultCont:CounSk	Consumable materials	Flat	\$45.00	\$45.00	0.00 %
College of Ed/Human Dev	EPSY 8405 CareerDev:Thry,Skills,Cnslng	Demand for service	Flat	\$42.00	\$42.00	0.00 %
College of Ed/Human Dev	EPSY 8413 Personality Assess	Demand for service	Flat	\$65.00	\$65.00	0.00 %
College of Ed/Human Dev	EPSY 8503 \$8504 Couns Prac I & II	Consumable materials	Flat	\$4.00	\$4.00	0.00 %
College of Ed/Human Dev	KIN 3027 Human Anatomy for Kin Students	Demand for service	Flat	\$30.00	\$30.00	0.00 %
College of Ed/Human Dev	KIN 3112 Introduction to Biomechanics	Consumable materials	Flat	\$25.00	\$25.00	0.00 %
College of Ed/Human Dev	KIN 3327 Tchng PE Elem Sch	Consumable materials	Flat	\$10.00	\$10.00	0.00 %
College of Ed/Human Dev	KIN 3385 Human Physiology for Kin Stndt	Consumable materials	Flat	\$20.00	\$20.00	0.00 %
College of Ed/Human Dev	KIN 4385 Exercise Physiology	Demand for service	Flat	\$80.00	\$80.00	0.00 %
College of Ed/Human Dev	KIN 5435 Exercise Science Laboratory	Consumable materials	Flat	\$50.00	\$50.00	0.00 %
College of Ed/Human Dev	KIN 5485 Advanced Exercise Testing	Demand for service	Flat	\$30.00	\$30.00	0.00 %
College of Ed/Human Dev	KIN 6596, KIN 6597, KIN 6598 - Clinical Exp I, II, III: Phys Ed	Consumable materials	Flat	New Fee	\$7.50	New Fee
College of Ed/Human Dev	PE 1004 and 1007	Demand for service	Flat	New Fee	\$25.00	New Fee
College of Ed/Human Dev	PE 1014 Cond.	Consumable materials	Flat	New Fee	\$5.00	New Fee
College of Ed/Human Dev	PE 1014 Cond.	Demand for service	Flat	\$50.00	\$50.00	0.00 %
College of Ed/Human Dev	PE 1022 Whitewater Kayaking	Transportation/field trip	Flat	\$100.00	\$100.00	0.00 %
College of Ed/Human Dev	PE 1029 Handball	Consumable materials	Flat	\$35.00	\$35.00	0.00 %
College of Ed/Human Dev	PE 1032, 1033, 1036 , 1038, 1059, 1067, 1072, 1072, 1074, 1138, 1174	Demand for service	Flat	\$10.00	\$5.00	-50.00 %
College of Ed/Human Dev	PE 1035 Karate	Consumable materials	Flat	\$35.00	\$35.00	0.00 %
College of Ed/Human Dev	PE 1036 and 1037	Consumable materials	Flat	New Fee	\$10.00	New Fee
College of Ed/Human Dev	PE 1037, 1042, 1055	Demand for service	Flat	\$10.00	\$10.00	0.00 %
College of Ed/Human Dev	PE 1043 Begin Horse Riding	Consumable materials	Flat	\$125.00	\$125.00	0.00 %
College of Ed/Human Dev	PE 1045 Rock Climbing	Consumable materials	Flat	\$25.00	\$25.00	0.00 %
College of Ed/Human Dev	PE 1047 Backpacking	Transportation/field trip	Flat	\$95.00	\$40.00	-57.89 %
College of Ed/Human Dev	PE 1048 Bowling	Consumable materials	Flat	\$50.00	\$50.00	0.00 %
College of Ed/Human Dev	PE 1057, 1058	Demand for service	Flat	\$100.00	\$110.00	10.00 %
College of Ed/Human Dev	PE 1136 Int. Racquetball	Consumable materials	Flat	\$10.00	\$5.00	-50.00 %
College of Ed/Human Dev	PE 1157 Intermediate Skiing	Demand for service	Flat	\$100.00	\$110.00	10.00 %
College of Ed/Human Dev	PE 1205, 1305	Demand for service	Flat	\$95.00	\$95.00	0.00 %
College of Ed/Human Dev	PE 1306 Lifeguard Training	Demand for service	Flat	\$30.00	\$30.00	0.00 %
College of Ed/Human Dev	PSTL 1112 Eco. Eval: Environmental Prob.	Transportation/field trip	Flat	\$20.00	\$20.00	0.00 %
College of Ed/Human Dev	PSTL 1112 Nature in the City	Transportation/field trip	Flat	New Fee	\$20.00	New Fee
College of Ed/Human Dev	PSTL 1133 Nature Study	Transportation/field trip	Flat	New Fee	\$40.00	New Fee
College of Ed/Human Dev	PSTL 1135 Human Anat and Phy	Consumable materials	Flat	New Fee	\$20.00	New Fee
College of Ed/Human Dev	PSTL 1485 Photography	Consumable materials	Flat	New Fee	\$50.00	New Fee
College of Ed/Human Dev	REC 5301 Wilderness and Adventure Educ	Transportation/field trip	Flat	\$35.00	\$35.00	0.00 %
College of Ed/Human Dev	REC 5311 Prog Outdr Env Ed	Transportation/field trip	Flat	\$15.00	\$15.00	0.00 %
College of Ed/Human Dev	SPST 1701 and 3143	Demand for service	Flat	\$50.00	\$50.00	0.00 %
College of Ed/Human Dev	SW 4501 SrSemSocJustice	Transportation/field trip	Flat	\$5.00	\$5.00	0.00 %
College of Ed/Human Dev	SW 8010, 8020, 8030	Demand for service	Per Credit	\$10.00	\$10.00	0.00 %
College of Ed/Human Dev	SW 8041 Specialized Field Placement	Demand for service	Flat	\$10.00	\$10.00	0.00 %
College of Ed/Human Dev	YOST 2241 Experiential Lrng	Demand for service	Flat	\$20.00	\$20.00	0.00 %
College of Ed/Human Dev	YOST 4314 Theatre Activities	Consumable materials	Flat	\$25.00	\$25.00	0.00 %
College of Ed/Human Dev	YOST 5101 and 5102 Youthwork Prac I & II	Transportation/field trip	Flat	\$25.00	\$25.00	0.00 %
College of Ed/Human Dev	YOST 5240 and 5241	Demand for service	Flat	\$25.00	\$25.00	0.00 %
College of Ed/Human Dev	YOST 5301 Comm Adol Sexuality	Demand for service	Flat	\$10.00	\$10.00	0.00 %
College of Liberal Arts	ANTH 1001 Human Evolution	Consumable materials	Flat	\$74.00	\$74.00	0.00 %
College of Liberal Arts	ARTS 1001 - Project Materials Fee	Consumable materials	Flat	New Fee	\$15.00	New Fee

Attachment 6 - Revised
University of Minnesota 2008-09 tuition Plan: Course Fees - Per Semester

Campus/College	Class Name	Fee Purpose	Type	2008 Amount	2009 Amount	Percent Change
College of Liberal Arts	ARTS 1301, 5821	Consumable materials	Flat	\$90.00	\$90.00	0.00 %
College of Liberal Arts	ARTS 1501, 5490	Consumable materials	Flat	\$75.00	\$75.00	0.00 %
College of Liberal Arts	ARTS 1801 Ceramics	Consumable materials	Flat	\$110.00	\$110.00	0.00 %
College of Liberal Arts	ARTS 1905 Freshman Seminar	Transportation/field trip	Flat	\$40.00	\$40.00	0.00 %
College of Liberal Arts	ARTS 3803 Ceramics: Mold Making	Consumable materials	Flat	\$170.00	\$170.00	0.00 %
College of Liberal Arts	ARTS 5400 - Paper & Paints	Consumable materials	Flat	New Fee	\$10.00	New Fee
College of Liberal Arts	ARTS 5405 Visual Narrative Structures	Consumable materials	Flat	\$20.00	\$20.00	0.00 %
College of Liberal Arts	ARTS 5830 Adv Ceramics: Mold Makng	Consumable materials	Flat	\$180.00	\$180.00	0.00 %
College of Liberal Arts	ARTS 5990 Independent Study	Consumable materials	Per Credit	\$50.00	\$50.00	0.00 %
College of Liberal Arts	ARTS 8500 Printmaking	Consumable materials	Flat	\$125.00	\$125.00	0.00 %
College of Liberal Arts	ARTS 8800 Ceramics	Consumable materials	Flat	\$250.00	\$250.00	0.00 %
College of Liberal Arts	Various courses - Art Major Project Exhibition Fee	Consumable materials	Flat	New Fee	\$10.00	New Fee
College of Liberal Arts	Various courses - Art Dept. - painting materials	Consumable materials	Flat	\$15.00	\$15.00	0.00 %
College of Liberal Arts	Various courses - Art Dept. - dimensional painting mat.	Consumable materials	Flat	\$30.00	\$30.00	0.00 %
College of Liberal Arts	Various courses - Art Dept. - drawing/painting materials	Consumable materials	Flat	\$35.00	\$35.00	0.00 %
College of Liberal Arts	Various courses - Art Dept.- drawing digital component	Consumable materials	Flat	New Fee	\$65.00	New Fee
College of Liberal Arts	Various courses - Art Dept.- Life Drawing Model	Consumable materials	Flat	\$95.00	\$95.00	0.00 %
College of Liberal Arts	Various courses - Art Dept. - drawing site trans. Fees	Transportation/field trip	Flat	\$110.00	\$110.00	0.00 %
College of Liberal Arts	Various courses - Art Dept. - sculpture project mat.	Consumable materials	Flat	\$25.00	\$25.00	0.00 %
College of Liberal Arts	Various courses - Art Dept.- performance art materials	Consumable materials	Flat	\$60.00	\$60.00	0.00 %
College of Liberal Arts	Various courses - Art Dept. - wod, metals, plaster materials	Consumable materials	Flat	\$85.00	\$85.00	0.00 %
College of Liberal Arts	Various courses - ARTS 3444, 8990 - Foundry materials fee	Consumable materials	Flat	\$25.00	\$25.00	0.00 %
College of Liberal Arts	Various courses - ARTS 3303, 5330 - Foundry materials	Consumable materials	Flat	\$50.00	\$50.00	0.00 %
College of Liberal Arts	Various courses - ARTS 3303, 5330 - Foundry Materials Fee	Consumable materials	Flat	\$200.00	\$200.00	0.00 %
College of Liberal Arts	Various courses - ARTS 3402, 5402 - Art Books	Consumable materials	Flat	\$40.00	\$40.00	0.00 %
College of Liberal Arts	Various courses - ARTS 3505, 5550, 1505 - Art Papermaking Materials Fee	Consumable materials	Flat	\$50.00	\$50.00	0.00 %
College of Liberal Arts	Various courses - ARTS 3444, 5444, 5998, 8990 Printmaking Materials fee	Consumable materials	Per Credit	\$75.00	\$75.00	0.00 %
College of Liberal Arts	Various courses - ARTS 3501, 3502 Printmaking Materials fee	Consumable materials	Flat	\$95.00	\$95.00	0.00 %
College of Liberal Arts	Various courses - ARTS 1502, 3510, 5110, 5520 Printmaking materials fee	Consumable materials	Flat	\$100.00	\$100.00	0.00 %
College of Liberal Arts	Various courses - ARTS 1601, 5990, 8600, 8990 Time & Interactivity Materials fee	Consumable materials	Flat	\$25.00	\$25.00	0.00 %
College of Liberal Arts	Various courses - ARTS 3602, 3603, 3604, 5620, 5630, 5640, 5670 materials fee	Consumable materials	Flat	\$50.00	\$50.00	0.00 %
College of Liberal Arts	Various courses - ARTS 3605, 5650 Time & Interactivity Materials fee	Consumable materials	Flat	\$75.00	\$75.00	0.00 %
College of Liberal Arts	Various courses - ARTS 3601, 3606, 5610, 5660 Time & Interactivity materials fee	Consumable materials	Flat	\$50-\$75	\$100.00	50.00%
College of Liberal Arts	Various courses - ARTS 3701, 3702, 5444 Photography materials fee	Consumable materials	Flat	\$50-\$75	\$40.00	0.00 %
College of Liberal Arts	Various courses - ARTS 1702, 3444 Photography Materials fee	Consumable materials	Flat	\$60.00	\$60.00	0.00 %
College of Liberal Arts	Various courses - ARTS 3703, 5701, 5710, 5990 Photography Materials fee	Consumable materials	Flat	\$80.00	\$80.00	0.00 %
College of Liberal Arts	Various courses - ARTS 8700, 8990 Art Photography Materials fee	Consumable materials	Flat	\$100.00	\$100.00	0.00 %
College of Liberal Arts	Various courses - ARTS 3444 - Ceramics Materials fee	Consumable materials	Per Credit	\$60.00	\$60.00	0.00 %
College of Liberal Arts	Various courses - Art Dept.-Ceramics Materials fee	Consumable materials	Per Credit	\$80.00	\$80.00	0.00 %
College of Liberal Arts	Various courses - Art Dept. Ceramics Materials fee	Consumable materials	Flat	\$140.00	\$140.00	0.00 %
College of Liberal Arts	Various courses - Art Dept.-Ceramics Materials fee	Consumable materials	Flat	\$160.00	\$160.00	0.00 %
College of Liberal Arts	Various courses - SLHS-Audiology Course Fee	Consumable materials	Flat	\$15.00	\$15.00	0.00 %
College of Liberal Arts	Various courses - SLHS Clinical Ed Course Fee	Consumable materials	Flat	\$15.00	\$15.00	0.00 %
College of Liberal Arts	Various courses - Journalism/Mass Comm-Basic Lab Fee	Consumable materials	Flat	\$9.00	\$9.00	0.00 %
College of Liberal Arts	Various courses - Journalism/Mass Comm-Printing Lab Fee	Consumable materials	Flat	\$22.00	\$22.00	0.00 %
College of Liberal Arts	Various courses - Journalism/Mass Comm-Digital Lab Fee	Consumable materials	Flat	\$28.00	\$28.00	0.00 %
College of Liberal Arts	Various courses - Theatre Arts Course Fee	Consumable materials	Flat	\$50.00	\$60.00	20.00%
College of Liberal Arts	Various courses - Accompanist Fee-Dance Courses	Demand for service	Flat	\$55.00	\$55.00	0.00 %
College of Liberal Arts	Various courses - Accompanist Fee-Tap Courses	Demand for service	Flat	New Fee	\$25.00	New Fee
College of Liberal Arts	Various courses - Accompanist Fee-Jazz Courses	Demand for service	Flat	New Fee	\$35.00	New Fee
College of Liberal Arts	Various courses - Music Course Fee-Piano	Demand for service	Flat	\$40.00	\$45.00	13.00%
College of Liberal Arts	Various courses - Ensemble Fee	Consumable materials	Flat	\$20.00	\$22.50	13.00%
College of Liberal Arts	Various courses - Music Course Fee-MUED	Consumable materials	Flat	New Fee	\$50.00	New Fee
College of Liberal Arts	Various courses - Anthropology Course Fee	Consumable materials	Flat	\$25.00	\$25.00	0.00 %
College of Liberal Arts	Various courses - Anthropology Course Fee-Archeology	Consumable materials	Flat	\$60.00	\$60.00	0.00 %
College of Liberal Arts	Various courses - Applied Music Fee-Majors	Demand for service	Per Credit	\$55.00	\$55.00	0.00 %
College of Liberal Arts	Various courses - Applied Music Fee-Secondary	Demand for service	Per Credit	\$75.00	\$75.00	0.00 %
College of Liberal Arts	Various courses - Applied Music Fee-Beyond Requirement	Demand for service	Per Credit	\$80.00	\$90.00	13.00%
College of Liberal Arts	Various courses - Applied Music Fee-Electives	Demand for service	Per Credit	\$150.00	\$155.00	New Fee
College of Liberal Arts	COMM 3201 Electronic Med Prod	Consumable materials	Flat	\$5.00	\$5.00	0.00 %

Attachment 6 - Revised
University of Minnesota 2008-09 tuition Plan: Course Fees - Per Semester

Campus/College	Class Name	Fee Purpose	Type	2008 Amount	2009 Amount	Percent Change
College of Liberal Arts	COMM 3204 Adv Electronic Media Prod	Consumable materials	Flat	\$10.00	\$10.00	0.00 %
College of Liberal Arts	CSCL 5256W Suburbia	Demand for service	Flat	\$55.00	\$55.00	0.00 %
College of Liberal Arts	CSCL 5411 Avant-Garde Cinema	Demand for service	Flat	New Fee	\$45.00	New Fee
College of Liberal Arts	DNCE 3500 Topics in Dance	Demand for service	Flat	\$55.00	\$55.00	0.00 %
College of Liberal Arts	DNCE 3500 Topics in Dance	Demand for service	Flat	\$55.00	\$55.00	0.00 %
College of Liberal Arts	FREN 3014 French Phonetics	Consumable materials	Flat	\$11.00	\$11.00	0.00 %
College of Liberal Arts	ID 1201 Career Exploration	Consumable materials	Flat	\$20.00	\$30.00	50.00 %
College of Liberal Arts	ID 3201 Career Plan	Consumable materials	Flat	\$40.00	\$40.00	0.00 %
College of Liberal Arts	SPAN 3401 Service Learning	Demand for service	Flat	\$10.00	\$10.00	0.00 %
College of Liberal Arts	SPAN 3401 Service Learning	Transportation/field trip	Flat	\$700.00	\$700.00	0.00 %
College of Liberal Arts	TH 1101W Intro to Theatre	Transportation/field trip	Flat	\$30.00	\$30.00	0.00 %
College of Liberal Arts	TH 1911W Entertainment w/ Attitude	Transportation/field trip	Flat	\$100.00	\$125.00	25.00 %
College of Liberal Arts	TH 5355 Puppetry in Theatre	Consumable materials	Flat	\$35.00	\$45.00	28.57 %
College of Liberal Arts	WRIT 4501 Usability Testing	Demand for service	Flat	New Fee	\$40.00	New Fee
College Food/Ag/Nat Rsrc Sci	AFEE 1001 Intro to Ag Ed & Ex	Transportation/field trip	Flat	\$20.00	\$20.00	0.00 %
College Food/Ag/Nat Rsrc Sci	AFEE 1001 Intro to Ag Ed & Ex	Transportation/field trip	Flat	\$20.00	\$40.00	100.00 %
College Food/Ag/Nat Rsrc Sci	AGRO 1101 Bio of Plant System	Consumable materials	Flat	\$46.50	\$46.50	0.00 %
College Food/Ag/Nat Rsrc Sci	AGRO 1103 Crops, Environment & Society	Consumable materials	Flat	\$30.00	\$30.00	0.00 %
College Food/Ag/Nat Rsrc Sci	AGRO 1660 First-Year Colloquium	Transportation/field trip	Flat	\$40.00	\$40.00	0.00 %
College Food/Ag/Nat Rsrc Sci	AGRO 1660 First-Year Colloquium	Transportation/field trip	Flat	\$40.00	\$55.00	37.50 %
College Food/Ag/Nat Rsrc Sci	AGRO 2101, 4005	Consumable materials	Flat	\$30.00	\$30.00	0.00 %
College Food/Ag/Nat Rsrc Sci	AGRO 4603 Field Crop Scout & Prob Diag	Transportation/field trip	Flat	\$25.00	\$25.00	0.00 %
College Food/Ag/Nat Rsrc Sci	ANSC 1001 Orientation to Animal Science	Transportation/field trip	Flat	\$20.00	\$20.00	0.00 %
College Food/Ag/Nat Rsrc Sci	ANSC 2055, 3301	Consumable materials	Flat	\$25.00	\$25.00	0.00 %
College Food/Ag/Nat Rsrc Sci	ANSC 3052 Equine Anatomy & Exercise Phys	Consumable materials	Flat	\$50.00	\$50.00	0.00 %
College Food/Ag/Nat Rsrc Sci	ANSC 4404 Applied Dairy Nutrition	Demand for service	Flat	\$35.00	\$35.00	0.00 %
College Food/Ag/Nat Rsrc Sci	ANSC 4603, 4613	Transportation/field trip	Flat	\$100.00	\$100.00	0.00 %
College Food/Ag/Nat Rsrc Sci	ANSC 8131 Mol Biol Tech	Consumable materials	Flat	\$150.00	\$150.00	0.00 %
College Food/Ag/Nat Rsrc Sci	APEC 1001 Orientation to Applied Econ	Transportation/field trip	Flat	\$20.00	\$20.00	0.00 %
College Food/Ag/Nat Rsrc Sci	APEC 5991 Special Topics: Applied Econ	Transportation/field trip	Flat	\$125.00	\$125.00	0.00 %
College Food/Ag/Nat Rsrc Sci	BBE 1001 Bioprds & Biosys Eng Orient	Transportation/field trip	Flat	\$40.00	\$55.00	37.50 %
College Food/Ag/Nat Rsrc Sci	BBE 3001, 3101	Consumable materials	Flat	\$10.00	\$10.00	0.00 %
College Food/Ag/Nat Rsrc Sci	BBE 3013 Engr Prin Cell Proc	Consumable materials	Flat	\$100.00	\$100.00	0.00 %
College Food/Ag/Nat Rsrc Sci	BBE 3023 Engr Prin SWP Proc	Consumable materials	Flat	\$40.00	\$40.00	0.00 %
College Food/Ag/Nat Rsrc Sci	BBE 4533 Agr Waste Mgmt Engr	Consumable materials	Flat	\$50.00	\$50.00	0.00 %
College Food/Ag/Nat Rsrc Sci	Various courses - Plant Pathology Course Fee	Consumable materials	Flat	\$20.00	\$20.00	0.00 %
College Food/Ag/Nat Rsrc Sci	Various courses - Transportation / Consumables	Transportation/field trip	Flat	\$25.00	\$20.00	-20.00 %
College Food/Ag/Nat Rsrc Sci	Various courses - Wetland Soils	Transportation/field trip	Flat	\$25.00	\$55.00	120.00 %
College Food/Ag/Nat Rsrc Sci	Various courses - Transportation / Lab fee	Transportation/field trip	Flat	\$50.00	\$75.00	50.00 %
College Food/Ag/Nat Rsrc Sci	Various courses - International Studies Travel Cost	Transportation/field trip	Flat	\$3,800.00	\$4,000.00	5.26 %
College Food/Ag/Nat Rsrc Sci	Various courses - FR 3471 / 5471 Forest Plng and Mgmt	Consumable materials	Flat	New Fee	\$25.00	New Fee
College Food/Ag/Nat Rsrc Sci	ENT 3005 Insect Biology	Consumable materials	Flat	New Fee	\$25.00	New Fee
College Food/Ag/Nat Rsrc Sci	ENT 5361 Aquatic Insects	Consumable materials	Flat	\$30.00	\$30.00	0.00 %
College Food/Ag/Nat Rsrc Sci	ESPM 1001 Orientation to ESPM	Transportation/field trip	Flat	\$40.00	\$55.00	37.50 %
College Food/Ag/Nat Rsrc Sci	ESPM 1011 Issues in the Environment	Transportation/field trip	Flat	\$15.00	\$15.00	0.00 %
College Food/Ag/Nat Rsrc Sci	ESPM 3221 Soil Conserv. & Land-Use Mngmt	Transportation/field trip	Flat	\$20.00	\$20.00	0.00 %
College Food/Ag/Nat Rsrc Sci	ESPM 4195W Problm Solvng & Plng in NR	Consumable materials	Flat	\$40.00	\$40.00	0.00 %
College Food/Ag/Nat Rsrc Sci	FR 1001 Orientation/Information System	Transportation/field trip	Flat	\$40.00	\$55.00	37.50 %
College Food/Ag/Nat Rsrc Sci	FR 2101, 2104	Demand for service	Flat	\$0.01	\$0.01	0.00 %
College Food/Ag/Nat Rsrc Sci	FR 2102, 5161	Demand for service	Flat	\$31.86	\$35.98	12.93 %
College Food/Ag/Nat Rsrc Sci	FR 2102 Northern Forests: Field Ecology	Demand for service	Flat	\$158.00	\$124.00	-21.52 %
College Food/Ag/Nat Rsrc Sci	FR 2102 Northern Forests: Field Ecology	Demand for service	Flat	\$30.00	\$30.00	0.00 %
College Food/Ag/Nat Rsrc Sci	FR 2102, 5161	Demand for service	Flat	\$550.00	\$550.00	0.00 %
College Food/Ag/Nat Rsrc Sci	FR 2102, 3612, 5612	Transportation/field trip	Flat	\$125.00	\$125.00	0.00 %
College Food/Ag/Nat Rsrc Sci	FR 3104, 5104	Transportation/field trip	Flat	\$70.00	\$70.00	0.00 %
College Food/Ag/Nat Rsrc Sci	FR 3203 Forest Fire & Disturbance Ecol	Transportation/field trip	Flat	\$20.00	\$20.00	0.00 %
College Food/Ag/Nat Rsrc Sci	FR 3431 Timber Harvesting & Road Plng	Demand for service	Flat	\$25.00	\$25.00	0.00 %
College Food/Ag/Nat Rsrc Sci	FR 5161 Northern Forest Field Course	Transportation/field trip	Flat	\$155.00	\$155.00	0.00 %
College Food/Ag/Nat Rsrc Sci	FR 5161 Northern Forest Field Course	Demand for service	Flat	\$158.00	\$113.50	-28.16 %
College Food/Ag/Nat Rsrc Sci	FR 5203 Forest Fire & Disturbance Ecol	Transportation/field trip	Flat	\$20.00	\$20.00	0.00 %
College Food/Ag/Nat Rsrc Sci	FR 5228 Adv Assessment & Modeling	Transportation/field trip	Flat	\$50.00	\$75.00	50.00 %
College Food/Ag/Nat Rsrc Sci	FR 5413 Mng For Ecosys:Silviculture Lab	Transportation/field trip	Flat	\$50.00	\$50.00	0.00 %
College Food/Ag/Nat Rsrc Sci	FR 5431 Timber Harvesting & Road Plng	Demand for service	Flat	\$25.00	\$25.00	0.00 %
College Food/Ag/Nat Rsrc Sci	FR 5611, 5621	Demand for service	Flat	\$65.00	\$65.00	0.00 %
College Food/Ag/Nat Rsrc Sci	FR 5611 Field Silviculture	Transportation/field trip	Flat	\$65.00	\$65.00	0.00 %
College Food/Ag/Nat Rsrc Sci	FR 5615 Fld Remote Sensing/Res Survey	Demand for service	Flat	\$70.00	\$70.00	0.00 %
College Food/Ag/Nat Rsrc Sci	FR 5621 Fld Timber Harvstg & Road Plng	Demand for service	Flat	\$75.00	\$75.00	0.00 %
College Food/Ag/Nat Rsrc Sci	FSCN 1001 Orientation to Nutrition	Transportation/field trip	Flat	\$20.00	\$20.00	0.00 %
College Food/Ag/Nat Rsrc Sci	FSCN 1021 Introductory Microbiology	Consumable materials	Flat	\$45.00	\$45.00	0.00 %
College Food/Ag/Nat Rsrc Sci	FSCN 3102 Introduction to Food Science	Consumable materials	Flat	\$35.00	\$35.00	0.00 %
College Food/Ag/Nat Rsrc Sci	FSCN 3731, 4312W	Consumable materials	Flat	\$25.00	\$25.00	0.00 %

Attachment 6 - Revised
University of Minnesota 2008-09 tuition Plan: Course Fees - Per Semester

Campus/College	Class Name	Fee Purpose	Type	2008 Amount	2009 Amount	Percent Change
College Food/Ag/Nat Rsrc Sci	FSCN 4122, 4613	Consumable materials	Flat	\$75.00	\$75.00	0.00 %
College Food/Ag/Nat Rsrc Sci	FSCN 4332 Food Processing Operations	Consumable materials	Flat	\$30.00	\$30.00	0.00 %
College Food/Ag/Nat Rsrc Sci	FSCN 4343 Processing of Dairy Products	Consumable materials	Flat	\$40.00	\$40.00	0.00 %
College Food/Ag/Nat Rsrc Sci	FW 1001 Orient in Fshrs,Wldlf,ConsBio	Transportation/field trip	Flat	\$40.00	\$55.00	37.50 %
College Food/Ag/Nat Rsrc Sci	FW 4101 Herpetology	Transportation/field trip	Flat	New Fee	\$25.00	New Fee
College Food/Ag/Nat Rsrc Sci	FW 4106 Imprtrnt Plants in FW Habitats	Demand for service	Flat	\$0.01	\$0.01	0.00 %
College Food/Ag/Nat Rsrc Sci	FW 4108 Fld Mthd Rsrch/Cons Vert Pops	Demand for service	Flat	\$550.00	\$550.00	0.00 %
College Food/Ag/Nat Rsrc Sci	FW 4108 Fld Mthd Rsrch/Cons Vert Pops	Transportation/field trip	Flat	\$120.00	\$150.00	25.00 %
College Food/Ag/Nat Rsrc Sci	FW 4108 Fld Mthd Rsrch/Cons Vert Pops	Demand for service	Flat	\$31.86	\$35.98	12.93 %
College Food/Ag/Nat Rsrc Sci	FW 4108 Fld Mthd Rsrch/Cons Vert Pops	Demand for service	Flat	\$158.00	\$124.00	-21.52 %
College Food/Ag/Nat Rsrc Sci	FW 4292 Special Lectures: Fisheries	Transportation/field trip	Flat	\$25.00	\$25.00	0.00 %
College Food/Ag/Nat Rsrc Sci	FW 4565 FW Ecology/Mgmt: Field Trip	Transportation/field trip	Flat	New Fee	\$250.00	New Fee
College Food/Ag/Nat Rsrc Sci	FW 5625 Wldlf Hndlng/Immobilization	Consumable materials	Flat	\$150.00	\$150.00	0.00 %
College Food/Ag/Nat Rsrc Sci	HORT 1001 Plant Propagation	Consumable materials	Flat	\$35.00	\$35.00	0.00 %
College Food/Ag/Nat Rsrc Sci	HORT 1004 Build Hort Learn Community	Transportation/field trip	Flat	\$40.00	\$55.00	37.50 %
College Food/Ag/Nat Rsrc Sci	HORT 1013 Floral Design	Consumable materials	Flat	\$200.00	\$200.00	0.00 %
College Food/Ag/Nat Rsrc Sci	HORT 1015 Woody & Herb Plts	Transportation/field trip	Flat	\$15.00	\$15.00	0.00 %
College Food/Ag/Nat Rsrc Sci	HORT 1031 Vines and Wines Intro	Consumable materials	Flat	\$60.00	\$60.00	0.00 %
College Food/Ag/Nat Rsrc Sci	HORT 3002W Greenhouse Management	Consumable materials	Flat	\$40.00	\$40.00	0.00 %
College Food/Ag/Nat Rsrc Sci	HORT 3005 Envir Effects on Hort Crops	Consumable materials	Flat	New Fee	\$30.00	New Fee
College Food/Ag/Nat Rsrc Sci	HORT 4021, 4023, 5018	Consumable materials	Flat	\$75.00	\$100.00	33.33 %
College Food/Ag/Nat Rsrc Sci	HORT 4022 CAD for Landscapes	Demand for service	Flat	\$75.00	\$75.00	0.00 %
College Food/Ag/Nat Rsrc Sci	HORT 4071W App of Plant Biotech to Pl Imp	Consumable materials	Flat	\$50.00	\$50.00	0.00 %
College Food/Ag/Nat Rsrc Sci	HORT 4072 Growing Plants Organically	Transportation/field trip	Flat	\$10.00	\$10.00	0.00 %
College Food/Ag/Nat Rsrc Sci	HORT 5031 Sustainable Fruit Prod Systems	Transportation/field trip	Flat	\$25.00	\$25.00	0.00 %
College Food/Ag/Nat Rsrc Sci	HORT 5071 Restoration & Reclam Ecology	Transportation/field trip	Flat	New Fee	\$30.00	New Fee
College Food/Ag/Nat Rsrc Sci	PLPA 5000 Issues in Plant Pathology	Consumable materials	Flat	\$20.00	\$20.00	0.00 %
College Food/Ag/Nat Rsrc Sci	RRM 1001 Orient. & Information Systems	Transportation/field trip	Flat	\$40.00	\$55.00	37.50 %
College Food/Ag/Nat Rsrc Sci	SOIL 4093, 4511, 5516, 8915	Transportation/field trip	Flat	\$35.00	\$35.00	0.00 %
Carlson School of Management	IBUS 3001 International Business Topics	Transportation/field trip	Flat	\$3,750.00	\$2,766.00	-26.24 %
Carlson School of Management	IBUS 3001, 4020	Transportation/field trip	Flat	\$4,800.00	\$3,816.00	-20.50 %
Carlson School of Management	IBUS 3010 - Internaitonal Bus. Topics	Transportation/field trip	Flat	New Fee	\$3,488.00	New Fee
Carlson School of Management	IBUS 5100 Undergraduate Exchange	Transportation/field trip	Flat	\$6,000.00	\$2,225.00	-62.70 %
Carlson School of Management	IBUS 5101 International Business Summer	Transportation/field trip	Flat	\$3,600.00	\$976.00	-72.89 %
Carlson School of Management	IBUS 5102 Vienna Summer Program	Transportation/field trip	Flat	\$3,500.00	\$2,188.00	-37.49 %
Carlson School of Management	IBUS 5103 Norway Summer Program	Transportation/field trip	Flat	\$3,000.00	\$1,688.00	-43.73 %
Carlson School of Management	IBUS 5110 Costa Rica Seminar	Transportation/field trip	Flat	\$4,200.00	\$808.00	-80.76 %
Carlson School of Management	IBUS 5120, 5130	Transportation/field trip	Flat	\$4,800.00	\$1,408.00	-70.67 %
Carlson School of Management	IBUS 5140 Vienna Summer Program	Transportation/field trip	Flat	\$5,500.00	\$712.00	-87.05 %
Carlson School of Management	IBUS 5150, 5170, 6315	Transportation/field trip	Flat	\$4,800.00	\$1,408.00	-70.67 %
Carlson School of Management	IBUS 5160 Cologne Summer Program	Transportation/field trip	Flat	New Fee	\$616.00	New Fee
Carlson School of Management	IBUS 5200 Undergraduate Exchange	Transportation/field trip	Flat	New Fee	\$9,270.00	New Fee
Carlson School of Management	IBUS 5301 International Business Summer	Transportation/field trip	Flat	New Fee	\$77.00	New Fee
School of Dentistry	DENT 5804 Oper Dent II Lab	Consumable materials	Flat	\$219.00	\$230.00	5.02 %
School of Dentistry	DENT 5901 Oral Anat. I	Consumable materials	Flat	\$15.91	\$15.91	0.00 %
School of Dentistry	DENT 5902 Oral Anat Lab I	Consumable materials	Flat	\$22.55	\$22.55	0.00 %
School of Dentistry	DENT 5904 PC Pros Lab II	Consumable materials	Flat	\$750.00	\$800.00	6.67 %
School of Dentistry	DENT 5908 PC Pros Tech Lab IV	Consumable materials	Flat	\$375.00	\$390.00	4.00 %
School of Dentistry	DENT 5908 PC Pros Tech Lab IV	Consumable materials	Flat	\$115.00	\$120.00	4.35 %
School of Dentistry	DENT 5912 PC Pros Tech Lab VI	Consumable materials	Flat	\$500.00	\$525.00	5.00 %
Institute of Technology	AEM 4331 Aerospace Design I	Consumable materials	Flat	\$50.00	\$50.00	0.00 %
Institute of Technology	AEM 4333 Aerospace Design III	Consumable materials	Flat	\$100.00	\$100.00	0.00 %
Institute of Technology	AEM 4601 Instrumentation Lab	Consumable materials	Flat	\$20.00	\$20.00	0.00 %
Institute of Technology	AEM 4602W Aeromechanics Lab	Consumable materials	Flat	\$40.00	\$40.00	0.00 %
Institute of Technology	Various courses-UNITE Special Fee-Section 881, 883, 885	Demand for service	Per Credit	\$150.00	\$150.00	0.00 %
Institute of Technology	BMEN 2501 Cell and Molecular Biology	Consumable materials	Flat	\$35.00	\$35.00	0.00 %
Institute of Technology	BMEN 3001, 3201, 3301, 3401	Consumable materials	Flat	\$10.00	\$10.00	0.00 %
Institute of Technology	BMEN 3101 Biomedical Transport Processes	Consumable materials	Flat	\$30.00	\$30.00	0.00 %
Institute of Technology	BMEN 4002W BME Engineering Design II	Consumable materials	Flat	\$100.00	\$100.00	0.00 %
Institute of Technology	CE 3402, 3406, 4401	Consumable materials	Flat	\$62.00	\$62.00	0.00 %
Institute of Technology	CE 5542, 5551	Consumable materials	Flat	\$50.00	\$50.00	0.00 %
Institute of Technology	CE 8551 Env Microbiol:Lab	Consumable materials	Flat	\$200.00	\$200.00	0.00 %
Institute of Technology	CHEM 1011, 1017, 1021, 1022, 1031H, 1032H	Consumable materials	Flat	\$52.50	\$54.00	2.86 %
Institute of Technology	CHEM 2111 Intro Anal Chem Lab	Consumable materials	Flat	\$54.50	\$56.00	2.75 %
Institute of Technology	CHEM 2311 Organic Lab	Consumable materials	Flat	\$79.00	\$81.00	2.53 %
Institute of Technology	CHEM 2312 Hon Organic Lab	Consumable materials	Flat	\$108.00	\$111.00	2.78 %
Institute of Technology	CHEM 4111W, 4121	Consumable materials	Flat	\$58.50	\$60.00	2.56 %
Institute of Technology	CHEM 4223W Polymer Lab	Consumable materials	Flat	\$81.00	\$83.00	2.47 %
Institute of Technology	CHEM 4311W Adv Org Chem Lab	Consumable materials	Flat	\$103.00	\$106.00	2.91 %

Attachment 6 - Revised
University of Minnesota 2008-09 tuition Plan: Course Fees - Per Semester

Campus/College	Class Name	Fee Purpose	Type	2008 Amount	2009 Amount	Percent Change
Institute of Technology	CHEM 4511W Adv Phys Chem Lab	Consumable materials	Flat	\$54.50	\$56.00	2.75 %
Institute of Technology	CHEM 4711W Adv Inorg Chem Lab	Consumable materials	Flat	\$87.50	\$90.00	2.86 %
Institute of Technology	CHEM 8153 Signal-noise	Consumable materials	Flat	\$61.50	\$63.00	2.44 %
Institute of Technology	CHEN 4401 Chem Eng Lab I	Consumable materials	Flat	New Fee	\$110.00	New Fee
Institute of Technology	CHEN 4402 Chem Eng Lab II	Consumable materials	Flat	New Fee	\$60.00	New Fee
Institute of Technology	EE 2002 Cir & Elec Lab	Consumable materials	Flat	New Fee	\$45.00	New Fee
Institute of Technology	EE 2201, 2302	Consumable materials	Flat	New Fee	\$39.00	New Fee
Institute of Technology	EE 2361 Intro Microcontrollers	Consumable materials	Flat	New Fee	\$55.00	New Fee
Institute of Technology	GEO 1006 Oceanography	Consumable materials	Flat	\$10.00	\$10.00	0.00 %
Institute of Technology	GEO 1901 Freshman Seminar: Envt	Transportation/field trip	Flat	New Fee	\$36.00	New Fee
Institute of Technology	GEO 2201, 2302	Transportation/field trip	Flat	\$16.50	\$18.00	9.09 %
Institute of Technology	GEO 3880 Lab Workshop	Consumable materials	Flat	\$20.00	\$20.00	0.00 %
Institute of Technology	GEO 3911 Intro Field Geology	Transportation/field trip	Flat	\$770.00	\$800.00	3.90 %
Institute of Technology	GEO 4301 Ig/Met Petrology	Transportation/field trip	Flat	\$16.50	\$18.00	9.09 %
Institute of Technology	GEO 4501 Structural Geology	Transportation/field trip	Flat	\$33.00	\$36.00	9.09 %
Institute of Technology	GEO 4702 General Hydrogeology	Transportation/field trip	Flat	New Fee	\$120.00	New Fee
Institute of Technology	GEO 4701 Geomorphology	Transportation/field trip	Flat	New Fee	\$54.00	New Fee
Institute of Technology	GEO 4911, 4971, 5791	Transportation/field trip	Flat	\$770.00	\$800.00	3.90 %
Institute of Technology	GEO 5353 Electron Microprobe	Consumable materials	Flat	\$60.00	\$60.00	0.00 %
Institute of Technology	GEO 5701 Hydrogeology	Transportation/field trip	Flat	\$90.00	\$54.00	-40.00 %
Institute of Technology	GEO 5713 Karst Hydrogeology	Transportation/field trip	Flat	\$15.00	\$18.00	20.00 %
Institute of Technology	IOFT 1101 Envir Issues Solns	Consumable materials	Flat	\$53.05	\$53.05	0.00 %
Institute of Technology	MATS 2002 Mech. Prop. Lab	Consumable materials	Flat	\$50.00	\$50.00	0.00 %
Institute of Technology	MATS 5223W Polymer Lab	Consumable materials	Flat	\$81.00	\$83.00	2.47 %
Institute of Technology	ME 2011 Intro Eng	Consumable materials	Flat	\$18.50	\$18.50	0.00 %
Institute of Technology	ME 3221, 4031W, 4131W, 4231, 4232, 4331, 4331W	Consumable materials	Flat	\$17.50	\$17.50	0.00 %
Institute of Technology	ME 5090, 5341	Consumable materials	Flat	\$15.50	\$15.50	0.00 %
Medical School	ANAT 3602, 3612	Consumable materials	Flat	\$40.00	\$40.00	0.00 %
Medical School	LAMP 6101, 6290	Consumable materials	Flat	\$10.00	\$10.00	0.00 %
Medical School	LAMP 6101 General Path	Demand for service	Flat	\$10.00	\$10.00	0.00 %
Medical School	LAMP 6300, 6301, 6302, 6303, 6304, 6305	Consumable materials	Flat	\$5.00	\$5.00	0.00 %
Medical School	MICB 3301, 4215, 4235	Consumable materials	Flat	\$80.00	\$82.50	3.13 %
Medical School	MORT 3151 R A Lab	Consumable materials	Flat	\$25.00	\$25.00	0.00 %
Medical School	MORT 3161 Embalming Laboratory	Consumable materials	Flat	\$50.00	\$110.00	120.00 %
Medical School	MORT 3171 Human Anatomy Laboratory	Consumable materials	Flat	New Fee	\$10.00	New Fee
Medical School	NSC 4185, 5551, 4105, 5111	Consumable materials	Flat	\$80.00	\$82.50	3.13 %
Medical School	NSC 5540 Biomedical Neuroscience	Demand for service	Flat	\$200.00	\$210.00	5.00 %
Medical School	NSC 5540 Biomedical Neuroscience	Demand for service	Flat	\$1,000.00	\$1,075.00	7.50 %
Medical School	NSC 5540 Biomedical Neuroscience	Demand for service	Flat	\$1,500.00	\$1,600.00	6.67 %
Medical School	NSC 5540 Biomedical Neuroscience	Demand for service	Flat	\$750.00	\$800.00	6.67 %
Medical School	NSCI 6111, 6112	Consumable materials	Flat	\$80.00	\$82.50	3.13 %
Medical School	PHSL 3063, 3701	Consumable materials	Flat	\$20.00	\$20.00	0.00 %
Medical School	PHSL 5510 Adv Cardiac Physiology	Consumable materials	Flat	\$460.00	\$525.00	14.13 %
Medical School	PHSL 5511 Adv Neuromuscular Jx Phsl	Consumable materials	Flat	\$395.00	\$395.00	0.00 %
Medical School	PHSL 5520 Advanced Pulmonary Mechanics	Consumable materials	Flat	\$310.00	\$310.00	0.00 %
Medical School	PHSL 5530 Drug Physiology	Consumable materials	Flat	\$200.00	\$200.00	0.00 %
School of Public Health	Various courses - ISP Administrative Fee	Demand for service	Flat	\$891.00	\$891.00	0.00 %
School of Public Health	Various courses - ISP International Administration Fee	Demand for service	Flat	\$1,391.00	\$1,391.00	0.00 %
School of Public Health	PUBH 6000, 6060, 6104, 6390, 6558, 6627, 6628, 6711, 6945, 7200, 7210, 7213, 7214, 7218, 7230, 7231, 7232	Demand for service	Per Credit	\$110.00	\$110.00	0.00 %
College of Continuing Ed	Various courses - Intensive English Program (IEP)	Demand for service	Flat	\$1,000.00	\$1,025.00	2.50 %
College of Continuing Ed	Various courses - Intensive English Program (IEP)	Demand for service	Flat	\$2,000.00	\$2,050.00	2.50 %
College of Continuing Ed	Various courses - Intensive English Program (IEP)	Demand for service	Flat	\$765.00	\$785.00	2.61 %
College of Continuing Ed	Various courses - Intensive English Program (IEP)	Demand for service	Flat	\$3,000.00	\$3,000.00	0.00 %
College of Continuing Ed	Various courses - MELP Preparation Course Fee	Demand for service	Flat	New Fee	\$575.00	New Fee
College of Continuing Ed	TRIN 3102 Consecutive Interpreting	Demand for service	Flat	New Fee	\$40.00	New Fee
College of Veterinary Medicine	VBS 2032 General Microbiology w/Lab	Demand for service	Flat	\$70.00	\$80.00	14.29 %
College of Veterinary Medicine	VPM 3700 Equine Reproductive Management	Transportation/field trip	Flat	\$50.00	\$50.00	0.00 %

Attachment 7 - Revised
University of Minnesota 2008-09 Tuition Plan: Academic/Term Fees - Per Semester

Campus/College	Fee Name	Credits	2008 Amount	2009 Amount	Percent Change
All Campuses	University Fee Per Credit	0.05 to 9.99	\$ 50.00	\$ 55.00	10%
All Campuses	University Fee Per Credit	10 to 999.99	\$ 500.00	\$ 550.00	10%
Crookston	Orientation Fee	0 to 999.99	\$75.00	\$75.00	0.00%
Crookston	Late Payment Fee	0 to 999.99	\$25.00	\$25.00	0.00%
Crookston	Installment Fee	0 to 999.99	\$10.00	\$10.00	0.00%
Crookston	Transcript Fee	0 to 999.99	\$5.00	\$5.00	0.00%
Crookston	Transcript Fee--rush order	0 to 999.99	\$10.00	\$10.00	0.00%
Crookston	Late Registration Fee--First Week	0 to 999.99	\$10.00	\$10.00	0.00%
Crookston	Late Registration Fee--Second Week	0 to 999.99	\$20.00	\$20.00	0.00%
Crookston	Application Fee	0 to 999.99	\$40.00	\$40.00	0.00%
Crookston	Technology Access Fee	0.05 to 5.5	\$100.00	\$100.00	0.00%
Crookston	Technology Access Fee	6 to 999.99	\$500.00	\$500.00	0.00%
Crookston	Technology Access-summer rental	0 to 999.99	\$175.00	\$175.00	0.00%
Crookston	Technology Access-summer intern	0 to 999.99	\$100.00	\$100.00	0.00%
Crookston	Technology Access - late return	0 to 999.99	\$50.00	\$50.00	0.00%
Crookston	Technology Access - daily rental	0 to 999.99	\$10.00	\$10.00	0.00%
Crookston	NSF Check Charge	0.05 to 999.99	\$25.00	\$25.00	0.00%
Crookston	Credit Exam Fee	0.05 to 999.99	\$50.00	\$50.00	0.00%
Crookston	Parking Permit Fee-All lots (all year)	0.05 to 999.99	\$68.00	\$68.00	0.00%
Crookston	Parking Permit - All lots - each semester	0.05 to 999.99	\$50.00	\$50.00	0.00%
Crookston	Parking Permit - Lot E - all year	0.05 to 999.99	\$35.00	\$35.00	0.00%
Crookston	Parking Permit-Reserved Parking	0.05 to 999.99	\$110.00	\$110.00	0.00%
Crookston	Parking Permit-Temp-1 week	0.05 to 999.99	\$5.00	\$5.00	0.00%
Crookston	Parking Permit - Temp - 1 month	0.05 to 999.99	\$15.00	\$15.00	0.00%
Crookston	Computer Insurance Deduction	0.05 to 999.99	\$500.00	\$500.00	0.00%
Crookston	Parking Permit - All lots-Duplicate	0.05 to 999.99	\$5.00	\$5.00	0.00%
Crookston	U-Card Replacement	0.05 to 999.99	\$15.00	\$15.00	0.00%
Crookston	Student Health Insurance	6 to 999.99	\$744.00	\$782.00	5.11%
Crookston	FedEx Overnight Service Fee-National	0.05 to 999.99	\$25.00	\$25.00	0.00%
Crookston	FedEx Overnight Service Fee-International	0.05 to 999.99	\$30.00	\$30.00	0.00%
Crookston	International Orientation Fee	0.05 to 999.99	\$75.00	\$75.00	0.00%
Crookston	Summer Start Program	0.05 to 999.99	\$250.00	\$250.00	0.00%
Crookston	Check Cashing Charge	0.05 to 999.99	New Fee	\$0.25	New Fee
Duluth School of Medicine	Medical School-Duluth collegiate/tech fee for medical students	0.05 to 999.99	\$200.00	\$200.00	0.00%
Duluth	Student Teaching Outside the Duluth Area	0.05 to 2.99	\$92.83	\$95.62	3.01%
Duluth	Student Teaching Outside the Duluth Area	3 to 5.99	\$185.65	\$191.22	3.00%
Duluth	Student Teaching Outside the Duluth Area	6 to 11.99	\$278.50	\$286.86	3.00%
Duluth	Student Teaching Outside the Duluth Area	12 to 999.99	\$556.97	\$573.68	3.00%
Duluth	Student Legislative Coalition	6 to 999.99	\$3.25	\$3.25	0.00%
Duluth	MN Publ Interest Research Grp	6 to 999.99	\$4.12	\$4.12	0.00%
Duluth	Late Payment Fee	0 to 999.99	\$20.00	\$20.00	0.00%
Duluth	Installment Fee	0 to 999.99	\$35.00	\$35.00	0.00%
Duluth	Late Registration Fee - First 2 Weeks	0 to 999.99	\$50.00	\$50.00	0.00%
Duluth	Late Registration Fee - Third Week or later	0 to 999.99	\$100.00	\$100.00	0.00%
Duluth	Application Fee-Undergraduate	0 to 999.99	\$35.00	\$35.00	0.00%
Duluth	Various Courses - FST Application Fee	1 to 999.99	New Fee	\$100.00	New Fee
Duluth	Orientation Fee	0 to 999.99	\$40.00	\$40.00	0.00%
Duluth	CE Technology/Equipment Fee	5 to 999.99	\$50.00	\$50.00	0.00%
Duluth	CE Technology/Equipment Fee-summer	5 to 999.99	\$25.00	\$25.00	0.00%
Duluth	CEHSP Technology/Equipment Fee	5 to 999.99	\$125.00	\$125.00	0.00%
Duluth	CEHSP Technology/Equipment Fee - summer	5 to 999.99	\$62.50	\$62.50	0.00%
Duluth	CLA Technology/Equipment Fee	5 to 999.99	\$150.00	\$150.00	0.00%
Duluth	CLA Technology/Equipment Fee - summer	5 to 999.99	\$75.00	\$75.00	0.00%
Duluth	SCSE Technology/Equipment Fee	5 to 999.99	\$150.00	\$150.00	0.00%
Duluth	SCSE Technology/Equipment Fee - summer	5 to 999.99	\$75.00	\$75.00	0.00%
Duluth	LSBE Technology/Equipment Fee	5 to 999.99	\$100.00	\$100.00	0.00%
Duluth	LSBE Technology/Equipment Fee - summer	5 to 999.99	\$50.00	\$50.00	0.00%
Duluth	SFA Technology/Equipment Fee	5 to 999.99	\$250.00	\$250.00	0.00%
Duluth	SFA Technology/Equipment Fee - summer	5 to 999.99	\$125.00	\$125.00	0.00%
Duluth	MAPL Program Application Fee	0.05 to 999.99	\$30.00	\$30.00	0.00%
Duluth	MEd Program Application Fee	0.05 to 999.99	\$30.00	\$30.00	0.00%
Duluth	MIS Program Application Fee	0.05 to 999.99	\$30.00	\$30.00	0.00%
Duluth	CEHSP Post-baccalaureate Fee	0.05 to 999.99	\$30.00	\$30.00	0.00%
Duluth	Rochester Equipment/Technology Fee	0.05 to 5.99	\$50.00	\$50.00	0.00%
Duluth	Rochester Equipment/Technology Fee	6 to 999.99	\$250.00	\$250.00	0.00%
Duluth	U-Card Replacement	0.05 to 999.99	\$15.00	\$15.00	0.00%
Duluth	NSF Check Charge	0.05 to 999.99	\$20.00	\$20.00	0.00%

Attachment 7 - Revised
University of Minnesota 2008-09 Tuition Plan: Academic/Term Fees - Per Semester

Campus/College	Fee Name	Credits	2008 Amount	2009 Amount	Percent Change
Duluth	Credit-by-Examamination Fee	1 to 999.99	\$50.00	\$50.00	0.00%
Duluth	Transcript Fee	0 to 999.99	\$5.00	\$5.00	0.00%
Duluth	Transcript Fee - Rush Order	0 to 999.99	\$10.00	\$10.00	0.00%
Duluth	Transcript Fee - Rush Order/Natl FedX	0 to 999.99	\$25.00	\$25.00	0.00%
Duluth	Transcript Fee - Rush Order/Intl FedX	0 to 999.99	\$30.00	\$30.00	0.00%
Duluth	Rochester MBA Technology Fee	0.05 to 5.99	\$75.00	\$75.00	0.00%
Duluth	Rochester MBA Technology Fee	6 to 999.99	\$150.00	\$150.00	0.00%
Duluth	Internet/Email Access Fee	0.05 to 12.99	\$5.40	\$5.56	2.96%
Duluth	Internet/Email Access Fee	13 to 999.99	\$68.00	\$70.00	2.94%
Duluth	CITS Email Access Fee	0.05 to 999.99	New Fee	\$5.56	New Fee
Morris	MN Publ Interest Research Grp	6 to 999.99	\$4.13	\$4.13	0.00%
Morris	Hospitalization Insurance	6 to 999.99	\$744.00	\$744.00	0.00%
Morris	Late Payment Fee	0 to 999.99	\$20.00	\$20.00	0.00%
Morris	Installment Fee	0 to 999.99	\$10.00	\$10.00	0.00%
Morris	Application Fee	0 to 999.99	\$35.00	\$35.00	0.00%
Morris	Freshman Confirmation Fee	0 to 999.99	\$125.00	\$125.00	0.00%
Morris	Student Center Fee	0.05 to 999.99	\$39.00	\$39.00	0.00%
Morris	Health Service Fee	6 to 999.99	\$60.00	\$70.00	16.67%
Morris	Activity Fee	6 to 999.99	\$89.00	\$89.00	0.00%
Morris	Intercollegiate Athletic Fee	6 to 999.99	\$25.00	\$25.00	0.00%
Morris	Activity Fee - Summer	0.05 to 999.99	\$30.00	\$30.00	0.00%
Morris	Regional Fitness Center Fee	6 to 999.99	\$50.00	\$57.50	15.00%
Morris	Technology Fee	6 to 999.99	\$52.50	\$52.50	0.00%
Morris	Transcript Fee	0.05 to 999.99	\$5.00	\$5.00	0.00%
Morris	Transcript Fee - Rush	0.05 to 999.99	\$10.00	\$10.00	0.00%
Morris	NSF Check Charge	0.05 to 999.99	\$20.00	\$20.00	0.00%
Morris	Transfer Confirmation Fee	0.05 to 999.99	\$125.00	\$125.00	0.00%
Morris	Credit Exam	0.05 to 999.99	\$50.00	\$50.00	0.00%
Morris	U Card Replacement Fee	0.05 to 999.99	\$15.00	\$15.00	0.00%
Rochester	Rochester Technology Fee	0.05 to 5.99	\$50.00	\$50.00	0.00%
Rochester	Rochester Technology Fee	6 to 999.99	\$100.00	\$100.00	0.00%
Rochester	Rochester Student Services Fee	6 to 999.99	\$3.00	\$3.00	0.00%
Twin Cities	Student Capital Enhancement Fee	6 to 999.99	New Fee	\$12.50	New Fee
Twin Cities Campuswide	Stadium Fee	6 to 999.99	\$ 12.50	\$12.50	0.00%
Academic Health Center	Application Processing Fee	0.05 to 999.99	\$55.00	\$55.00	0.00%
Academic Health Center	Admission Confirmation Fee	0.05 to 999.99	\$250.00	\$250.00	0.00%
College of Design	CDes Collegiate Fee Undergraduate except Housing & Retail	1 to 5	\$125.00	\$135.00	8.00%
College of Design	CDes Collegiate Fee Undergraduate except Housing & Retail	6 to 999	\$250.00	\$268.00	7.20%
College of Design	CDes Collegiate Fee Summer non-housing non-retail	1 to 5	\$62.50	\$67.50	8.00%
College of Design	CDes Collegiate Fee Summer non-housing non-retail	6 to 99999	\$125.00	\$135.00	8.00%
College of Design	Locker Rental Fee	0.05 to 999.99	\$15.00	\$15.00	0.00%
College of Design	Key Deposit Fee	0.05 to 999.99	\$20.00	\$20.00	0.00%
College of Design	CDes Collegiate fee for Grad Programs full-rate	0.01 to 0.05	\$0.00	\$135.00	New Fee
College of Design	CDes Collegiate fee for Grad Programs full-rate	0.06 to 999	\$250.00	\$268.00	7.20%
College of Design	CDes Collegiate Fee for Housing & Retail Undergrad majors	1 to 5	\$87.50	\$95.00	8.57%
College of Design	CDes Collegiate Fee for Housing & Retail Undergrad majors	6 to 999.99	\$175.00	\$190.00	8.57%
College of Design	Collegiate Fee for DHA Grad Plans, MA, MS, and PhD	0.01 to 0.05	\$0.00	\$95.00	New Fee
College of Design	Collegiate Fee for DHA Grad Plans, MA, MS, and PhD	0.05 to 999.99	\$175.00	\$190.00	8.57%
College of Design	CDes Collegiate Fee Summer Housing and Retail Merchandising	0.01 to 0.05	New Fee	\$47.50	New Fee
College of Design	CDes Collegiate Fee Summer Housing and Retail Merchandising	0.05 to 999.99	New Fee	\$95.00	New Fee
College of Biological Sciences	CBS Technology Fee - summer	3 to 999.99	\$95.00	\$98.00	3.16%
College of Biological Sciences	CBS Technology Fee	3 to 5.99	\$95.00	\$98.00	3.16%
College of Biological Sciences	CBS Technology Fee	6 to 999.99	\$190.00	\$196.00	3.16%
College of Ed/Human Dev	EdHD Technology Fee	2 to 5.99	\$60.00	\$60.00	0.00%
College of Ed/Human Dev	EdHD Technology Fee	6 to 999.99	\$120.00	\$120.00	0.00%
College of Ed/Human Dev	EDPA Administrative Licensure Fee	0.05 to 999.99	\$550.00	\$550.00	0.00%
College of Ed/Human Dev	Part-time School Counseling Licensure Application Fee	0.05 to 999.99	\$30.00	\$30.00	0.00%
College of Ed/Human Dev	School Psychology Program Fees	0.05 to 999.99	\$75.00	\$75.00	0.00%
College of Ed/Human Dev	School Psychology Program Fees	0.05 to 999.99	\$30.00	\$30.00	0.00%
College of Ed/Human Dev	Master of Education and Endorsement Program Application Fee	0.05 to 999.99	\$55.00	\$55.00	0.00%
College of Ed/Human Dev	Initial Licensure-Master of Education Confirmation Fee	0.05 to 999.99	\$50.00	\$50.00	0.00%
College of Ed/Human Dev	Credential Registration Fee	0.05 to 999.99	\$48.00	\$48.00	0.00%

Attachment 7 - Revised
University of Minnesota 2008-09 Tuition Plan: Academic/Term Fees - Per Semester

Campus/College	Fee Name	Credits	2008 Amount	2009 Amount	Percent Change
College of Ed/Human Dev	Credential Fee Additional Files	0.05 to 999.99	\$5.00	\$5.00	0.00%
College of Ed/Human Dev	Credential Copy Fee	0.05 to 999.99	\$5.00	\$5.00	0.00%
College of Ed/Human Dev	Inactive Credential File Fee	0.05 to 999.99	\$12.00	\$12.00	0.00%
College of Ed/Human Dev	Credential Next Day Service	0.05 to 999.99	\$15.00	\$15.00	0.00%
College of Ed/Human Dev	Credential Pick Up Fee	0.05 to 999.99	\$5.00	\$5.00	0.00%
College of Ed/Human Dev	EDPA Multiple Endorsement Fee	0.05 to 999.99	\$275.00	\$275.00	0.00%
College of Ed/Human Dev	EdHD Technology Fee - UG & Grad (fall, spring, summer)	0.05 to 5.99	\$60.00	\$60.00	0.00%
College of Ed/Human Dev	EdHD Technology Fee - UG & Grad (fall, spring, summer)	6 to 999.99	\$120.00	\$120.00	0.00%
College of Ed/Human Dev	Key Deposit	0.05 to 999.99	\$10.00	\$10.00	0.00%
College of Ed/Human Dev	Credit Exam Fee	0.05 to 999.99	\$50.00	\$50.00	0.00%
College of Liberal Arts	UG & Grad CLA Technology Fee (fall, spring, summer)	0.05 to 5.99	\$50.00	\$52.50	5.00%
College of Liberal Arts	UG & Grad CLA Technology Fee (fall, spring, summer)	6 to 999.99	\$100.00	\$105.00	5.00%
College of Liberal Arts	Art-Majors Studio Deposits	0.05 to 999.99	\$50.00	\$50.00	0.00%
College of Liberal Arts	Art-Graduate Studio Deposit	0.05 to 999.99	\$100.00	\$100.00	0.00%
College of Liberal Arts	CCLC-Job Search Jump Start workshop fees	0.05 to 999.99	\$20.00	\$20.00	0.00%
College of Liberal Arts	English - dossier mailings	0.05 to 999.99	\$25.00	\$25.00	0.00%
College of Liberal Arts	English-key deposit	0.05 to 999.99	\$10.00	\$10.00	0.00%
College of Liberal Arts	English-key deposit	0.05 to 999.99	\$2.00	\$2.00	0.00%
College of Liberal Arts	Marching Band Instrument rental	0.05 to 999.99	\$50.00	\$50.00	0.00%
College of Liberal Arts	Music-Instrument Rental Level I (Music Ed/Non-Professional)	0.05 to 999.99	\$97.50	\$100.00	2.56%
College of Liberal Arts	Music-Instrument Rental Level II (Professional/Valued under \$7000)	0.05 to 999.99	\$127.50	\$135.00	5.88%
College of Liberal Arts	Music-Instrument Rental Level III (professional/valued over \$7000)	0.05 to 999.99	\$150.00	\$160.00	6.67%
College of Liberal Arts	Music- C, D, E, F, or G Practice Rooms-Semester Usage Majors/Minor	0.05 to 999.99	\$80.00	\$80.00	0.00%
College of Liberal Arts	Music-Practice Rooms Hourly Usage Majors/Minors	0.05 to 999.99	\$20.00	\$25.00	25.00%
College of Liberal Arts	Music-Practice Room - lost access card	0.05 to 999.99	\$15.00	\$20.00	33.33%
College of Liberal Arts	Music - Recital Staffing	0.05 to 999.99	\$60.00	\$60.00	0.00%
College of Liberal Arts	Marching Band - Spat camp	0.05 to 999.99	\$80.00	\$80.00	0.00%
College of Liberal Arts	Music- Locker Room Keycard Replacement	0.05 to 999.99	\$40.00	\$45.00	12.50%
College of Liberal Arts	Music- Locker Rental Full-Year	0.05 to 999.99	\$90.00	\$90.00	0.00%
College of Liberal Arts	Music - Locker Rental Single Term	0.05 to 999.99	\$70.00	\$70.00	0.00%
College of Liberal Arts	CLA Language Center-Student Multimedia Lab Laser Prints	0.05 to 999.99	\$0.10	\$0.10	0.00%
College of Liberal Arts	Art Locker Fee in Regis Center - fall & spring	0.05 to 999.99	\$45.00	\$45.00	0.00%
College of Liberal Arts	CCLC - NSE Orientation/Activity Fee	0.05 to 999.99	\$50.00	\$50.00	0.00%
College of Liberal Arts	CCLC - Program Fees	0.05 to 999.99	\$200.00	\$200.00	0.00%
College of Liberal Arts	Art Locker Fee in Regis Center - fall or spring	0.05 to 999.99	\$25.00	\$25.00	0.00%
College of Liberal Arts	Art Locker Fee in Regis Center - spring & summer	0.05 to 999.99	\$50.00	\$50.00	0.00%
College of Liberal Arts	Marching Band - Uniform Dry Cleaning (from \$1.50 to \$25)	0.05 to 999.99	\$1.50	\$1.50	0.00%
College of Liberal Arts	Music-Practice Rooms Hourly Usage Non-Majors/Minors	0.05 to 999.99	\$45.00	\$50.00	11.11%
College of Liberal Arts	Music- C, D, E, F, or G Practice Rooms-Semester Use NonMajor/Minor	0.05 to 999.99	\$105.00	\$110.00	4.76%
College of Liberal Arts	Music- B Practice Rooms-Semester Usage Majors/Minors	0.05 to 999.99	\$65.00	\$65.00	0.00%
College of Liberal Arts	Music- B Practice Rooms-Semester Use NonMajor/Minor	0.05 to 999.99	\$90.00	\$100.00	11.11%
College of Liberal Arts	Music- Recital Cancellation 7 or less days	0.05 to 999.99	\$150.00	\$150.00	0.00%
College of Liberal Arts	Music- Recital Cancellation 8-28 days	0.05 to 999.99	\$75.00	\$75.00	0.00%
College of Liberal Arts	Music- Ferguson Hall Lobby rental for Recital Receptions	0.05 to 999.99	\$35.00	\$35.00	0.00%
College of Liberal Arts	Music- Ultan Recital Hall Rental	0.05 to 999.99	\$25.00	\$25.00	0.00%
College of Liberal Arts	Music- Recording Technical Assistance	0.05 to 999.99	\$35.00	\$35.00	0.00%
College of Liberal Arts	Music- Requested Piano and/or Harpsichord Tunings	0.05 to 999.99	\$98.00	\$100.00	2.04%
College of Liberal Arts	Music- Recital Recording Editing	0.05 to 999.99	\$35.00	\$35.00	0.00%
College of Liberal Arts	CCLC - recommendation letter repository and services	0.05 to 999.99	\$30.00	\$30.00	0.00%
College of Liberal Arts	CLA Language Ctr-Individual LPE Testing	0.05 to 999.99	\$30.00	\$30.00	0.00%
College of Liberal Arts	CLA Language Center - LPE Screening Test	0.05 to 999.99	\$20.00	\$20.00	0.00%
College of Liberal Arts	CLA Equipment Loan Late Fees	0.05 to 999.99	\$25.00	\$25.00	0.00%
College of Liberal Arts	Ensemble lost music 10 or less pieces	0.05 to 999.99	\$50.00	\$50.00	0.00%
College of Liberal Arts	Ensemble lost music fee 11 or more pieces	0.05 to 999.99	\$75.00	\$75.00	0.00%
College of Liberal Arts	Ensemble lost music fee: lost score	0.05 to 999.99	\$200.00	\$200.00	0.00%
College of Liberal Arts	Art Dept Equipment Replacement	0.05 to 999.99	\$3,500.00	\$3,500.00	0.00%
College of Liberal Arts	Art Dept Equipment Repair	0.05 to 999.99	\$500.00	\$500.00	0.00%
College of Liberal Arts	Art Dept Late Equipment Fee	0.05 to 999.99	\$25.00	\$25.00	0.00%
College of Liberal Arts	Recording Session Cancellation Fee	0.05 to 999.99	\$100.00	\$100.00	0.00%
College of Liberal Arts	Art Locker Fee in Regis Center - summer	0.05 to 999.99	\$10.00	\$10.00	0.00%
College of Liberal Arts	Art - Key Deposit	0.05 to 999.99	\$10.00	\$10.00	0.00%
College of Liberal Arts	CLA Special Exam Fee	0.05 to 999.99	\$50.00	\$50.00	0.00%
College of Liberal Arts	Music-Performance Duplication Fee	0.05 to 999.99	\$8.00	\$12.00	50.00%
College of Food/Ag/Nat Rsrc Sci	Coordinated Programs	0.05 to 999.99	\$1,250.00	\$1,250.00	0.00%
College of Food/Ag/Nat Rsrc Sci	Dietetic Internship	0.05 to 999.99	\$3,400.00	\$3,400.00	0.00%
College of Food/Ag/Nat Rsrc Sci	CFANS Technology Fee - UG, Grad, DM - spring & fall	0 to 5.99	\$55.00	\$55.00	0.00%
College of Food/Ag/Nat Rsrc Sci	CFANS Technology Fee - UG, Grad, DM - spring & fall	6 to 999.99	\$110.00	\$110.00	0.00%
College of Food/Ag/Nat Rsrc Sci	CFANS Technology Fee - UG, Grad , DM - summer	0 to 2.99	\$27.50	\$27.50	0.00%

Attachment 7 - Revised
University of Minnesota 2008-09 Tuition Plan: Academic/Term Fees - Per Semester

Campus/College	Fee Name	Credits	2008 Amount	2009 Amount	Percent Change
College of Food/Ag/Nat Rsrc Sci	CFANS Technology Fee - UG, Grad , DM - summer	3 to 999.99	\$55.00	\$55.00	0.00%
College of Food/Ag/Nat Rsrc Sci	Locker Rental Fee - small	0.05 to 999.99	\$15.00	\$15.00	0.00%
College of Food/Ag/Nat Rsrc Sci	Locker Rental Fee - large	0.05 to 999.99	\$20.00	\$20.00	0.00%
Carlson School of Management	CSOM PT-MBA Student Svcs & Tech Fee	0.05 to 999.99	\$215.00	\$290.00	34.88%
Carlson School of Management	CSOM PT-MBA Student Svcs & Tech Fee - summer	0.05 to 999.99	\$107.50	\$145.00	34.88%
Carlson School of Management	CSOM PhD, MAHRIR Technology Fee	0.05 to 999.99	\$315.00	\$315.00	0.00%
Carlson School of Management	CSOM Sum PhD MAHRIR Technology Fee - summer	0.05 to 999.99	\$157.50	\$157.50	0.00%
Carlson School of Management	CSOM FT-MBA Student Svcs & Tech Fee	0.05 to 999.99	\$315.00	\$480.00	52.38%
Carlson School of Management	CSOM FT-MBA Student Svcs & Tech Fee - summer	0.05 to 999.99	\$157.50	\$240.00	52.38%
Carlson School of Management	CSOM UGrad Stud Collegiate Fee	6 to 999.99	\$225.00	\$237.50	5.55%
Carlson School of Management	CSOM Sum EMAHRIR, MBT, MAcc Technology Fee - summer	0.05 to 999.99	\$107.50	\$107.50	0.00%
Carlson School of Management	CSOM Sum Ugrd w<6 cr Technology Fee>	0.05 to 5.99	\$50.00	\$50.00	0.00%
Carlson School of Management	CSOM Ugrd w<6 cr Technology Fee>	0.05 to 5.99	\$100.00	\$100.00	0.00%
Carlson School of Management	CSOM EMAHRIR, MAcc, MBT, AS Technology Fee	0.05 to 999.99	\$215.00	\$215.00	0.00%
Carlson School of Management	CSOM UGrad Stud Collegiate Fee	6 to 999.99	\$450.00	\$475.00	5.55%
Carlson School of Management	CSOM MBA Laptop	0.05 to 999.99	\$755.50	\$733.86	-2.86%
Carlson School of Management	Carlson School International Program Cancellation Fee	0.05 to 999.99	\$1,500.00	\$1,500.00	0.00%
Carlson School of Management	Carlson School International Program Deferral Fee	0.05 to 999.99	\$500.00	\$500.00	0.00%
Carlson School of Management	CSOM PhD, MAHRIR Technology Fee	0.05 to 999.99	\$315.00	\$315.00	0.00%
Carlson School of Management	CSOM Credit Exam fee	0.01 to 999.99	\$50.00	\$50.00	0.00%
School of Dentistry	Dentistry Instrument Usage Fee - Peds(Grad & Certificate)	0.05 to 999.99	\$625.00	\$650.00	4.00%
School of Dentistry	Dentistry Instrument Usage Fee - Perio(Grad & Certificate)	0.05 to 999.99	\$460.00	\$480.00	4.35%
School of Dentistry	DDS Student Application Fee	0.05 to 999.99	\$75.00	\$75.00	0.00%
School of Dentistry	DDS Tuition Deposits	0.05 to 999.99	\$1,045.00	\$1,000.00	-4.31%
School of Dentistry	Dental Hygiene Tuition Deposits	0.05 to 999.99	\$150.00	\$150.00	0.00%
School of Dentistry	Transfer Evaluation Fee - DDS	0.05 to 999.99	\$1,000.00	\$1,000.00	0.00%
School of Dentistry	Dentistry Instrument Usage Fee - Prosth(Grad & Certificate)	0.05 to 999.99	\$715.00	\$745.00	4.20%
School of Dentistry	Microscope Fee - Endo1(Grad & Certificate)	0.05 to 999.99	\$425.00	\$425.00	0.00%
School of Dentistry	Microscope Fee - Endo2(Grad & Certificate)	0.05 to 999.99	\$425.00	\$425.00	0.00%
School of Dentistry	Dental Overgarment Fee - Oral Surgery	0.02 to 999.99	\$50.00	\$52.00	4.00%
School of Dentistry	Dentistry Instrument Usage Fee - TMJ(Grad & Certificate)	0.05 to 999.99	\$365.00	\$380.00	4.11%
School of Dentistry	Dental Overgarment Fee - Ortho(Grad and Certificate)	0.05 to 999.99	\$75.00	\$78.00	4.00%
School of Dentistry	Dentistry Instrument Usage Fee - DDS1	0.05 to 999.99	\$1,530.00	\$1,600.00	4.58%
School of Dentistry	Dentistry Instrument Usage Fee - DDS2	0.05 to 999.99	\$1,375.00	\$1,530.00	11.27%
School of Dentistry	Dentistry Instrument Usage Fee - DDS2	0.05 to 999.99	\$585.00	\$731.00	24.96%
School of Dentistry	Dentistry Instrument Usage Fee - DDS3	0.05 to 999.99	\$1,375.00	\$1,430.00	4.00%
School of Dentistry	Dentistry Instrument Usage Fee - DDS3	0.05 to 999.99	\$688.00	\$860.00	25.00%
School of Dentistry	Dentistry Instrument Usage Fee - DDS4	0.05 to 999.99	\$1,170.00	\$1,375.00	17.52%
School of Dentistry	Dentistry Instrument Usage Fee - DDS4	0.05 to 999.99	\$585.00	\$731.00	24.96%
School of Dentistry	Dentistry Instrument Usage Fee - DDS5	0.05 to 999.99	\$1,170.00	\$1,375.00	17.52%
School of Dentistry	Dentistry Instrument Usage Fee - Endo(Grad & Certificate)	0.05 to 999.99	\$655.00	\$680.00	3.82%
School of Dentistry	Dentistry Instrument Usage Fee - DH	0.05 to 999.99	\$600.00	\$625.00	4.17%
School of Dentistry	Dent Fellow Spec (OMS)	0.05 to 999.99	\$761.00	\$818.00	7.49%
School of Dentistry	Dent Fellow Spec (ORTHO, PED, PERIO, PROS, TMJ, OHSOA, ENDO)	0.05 to 999.99	\$1,523.00	\$1,637.00	7.49%
School of Dentistry	Dentistry Equipment Fee - Grad and Certificate Programs & DDS 3&4	0.05 to 999.99	\$155.00	\$162.00	4.52%
School of Dentistry	Dent Fellow Spec (ENDO)	0.05 to 999.99	\$1,523.00	\$1,637.00	7.49%
School of Dentistry	Health Insurance Premium - Dental Residents/Masters of Dent Hyg	0.05 to 999.99	\$89.00	\$99.00	11.24%
School of Dentistry	Disability Insurance -DDS1&2&3&4&Pass (Fall only)	0.05 to 999.99	\$70.00	\$70.00	0.00%
School of Dentistry	DDS4 Modified Curriculum	0.05 to 999.99	\$410.00	\$441.00	7.56%
School of Dentistry	DDS3 Modified Curriculum	0.05 to 999.99	\$323.49	\$348.00	7.58%
School of Dentistry	DDS2 Modified Curriculum	0.05 to 999.99	\$429.57	\$462.00	7.55%
School of Dentistry	DDS1 Modified Curriculum	0.05 to 999.99	\$430.75	\$463.00	7.49%
School of Dentistry	Dentistry Instrument Usage Fee DDS5	0.05 to 999.99	\$567.50	\$709.00	24.93%
School of Dentistry	PASS STUDENT APPLICATION FEE	0.05 to 999.99	\$100.00	\$100.00	0.00%
School of Dentistry	PASS1 PROGRAM DEPOSITS	0.05 to 999.99	\$17,325.00	\$19,215.00	10.91%
School of Dentistry	DDS1 Modified Curriculum- Non resident	0.05 to 999.99	\$753.39	\$821.00	8.97%
School of Dentistry	DDS2 MODIFIED CIRRICULUM-NON RESIDENT	0.05 to 999.99	\$755.00	\$823.00	9.01%
School of Dentistry	DDS3 MODIFIED CIRRICULUM-NON RESIDENT	0.05 to 999.99	\$568.00	\$619.00	8.98%
School of Dentistry	DDS4 MODIFIED CIRRICULUM-NON RESIDENT	0.05 to 999.99	\$719.00	\$784.00	9.04%
School of Dentistry	Dentistry Equipment Fee	0.05 to 999.99	\$155.00	\$162.00	4.52%
School of Dentistry	Dentistry Instrument Usage Fee-DH - summer	0.05 to 999.99	\$300.00	\$375.00	25.00%
School of Dentistry	Dentistry Instrument Usage Fee DDS3-PASS - summer	0.05 to 999.99	\$688.00	\$860.00	25.00%
School of Dentistry	Dentistry Instrument Usage Fee-DDS3-PASS	0.05 to 999.99	\$1,375.00	\$1,430.00	4.00%
School of Dentistry	Dentistry Instrument Usage Fee DDS4-PASS	0.05 to 999.99	\$1,170.00	\$1,375.00	17.52%
School of Dentistry	Dentistry Instrument Usage Fee DDS4-PASS - summer	0.05 to 999.99	\$585.00	\$731.00	24.96%
School of Dentistry	Dentistry Equipment Fee DDS-PASS 3 & 4	0.05 to 999.99	\$155.00	\$162.00	4.52%
School of Dentistry	Dental Hygiene Grad Application Fee	0.05 to 999.99	New Fee	\$100.00	New Fee
School of Dentistry	Dentistry Equipment Usage Fee-Dental Hygiene- Grad	0.05 to 999.99	New Fee	\$162.00	New Fee

Attachment 7 - Revised
University of Minnesota 2008-09 Tuition Plan: Academic/Term Fees - Per Semester

Campus/College	Fee Name	Credits	2008 Amount	2009 Amount	Percent Change
School of Dentistry	Equipment Usage Fee DDS 1 DDS2	0.05 to 999.99	New Fee	\$200.00	New Fee
School of Dentistry	Dent Endo Typodont-PASS DDS3	0.05 to 999.99	New Fee	\$129.00	New Fee
School of Dentistry	Dent Lab Articulators DDS3-PASS	0.05 to 999.99	New Fee	\$800.00	New Fee
School of Dentistry	Dent Oper/Pros Typodont-DDS3-PASS	0.05 to 999.99	New Fee	\$180.00	New Fee
Exec VP & Provost	Grad School Orientation Fee	0.05 to 999.99	\$40.00	\$50.00	25.00%
Exec VP & Provost	Stop Payment-returned refund checks fee	0.05 to 999.99	\$10.00	\$10.00	0.00%
Exec VP & Provost	Application Fee - Undergrads	0 to 999.99	\$45.00	\$45.00	0.00%
Exec VP & Provost	Freshman Confirmation Fee	0 to 999.99	\$160.00	\$160.00	0.00%
Exec VP & Provost	Transfer Confirmation Fee	0.05 to 999.99	\$70.00	\$70.00	0.00%
Exec VP & Provost	Transcript-official copy	0.05 to 999.99	\$5.00	\$5.00	0.00%
Exec VP & Provost	Transcript-official copy Rush	0.05 to 999.99	\$10.00	\$10.00	0.00%
Exec VP & Provost	Late Payment	0.05 to 999.99	\$30.00	\$30.00	0.00%
Exec VP & Provost	Installment	0.05 to 999.99	\$35.00	\$35.00	0.00%
Exec VP & Provost	NSF Check Charge	0.05 to 999.99	\$20.00	\$20.00	0.00%
Exec VP & Provost	Late Registration-1st week	0.05 to 999.99	\$50.00	\$50.00	0.00%
Exec VP & Provost	Late Registration-2nd week	0.05 to 999.99	\$50.00	\$50.00	0.00%
Exec VP & Provost	Late Registration-3rd week	0.05 to 999.99	\$100.00	\$100.00	0.00%
Exec VP & Provost	Transcript&other misc-Fed Ex Priority Overnight	0.05 to 999.99	\$15.00	\$15.00	0.00%
Exec VP & Provost	Transcript&other misc-International Priority	0.05 to 999.99	\$20.00	\$20.00	0.00%
Exec VP & Provost	Late Registration-1st week Summer	0.05 to 999.99	\$25.00	\$25.00	0.00%
Exec VP & Provost	Late Registration-2nd week Summer	0.05 to 999.99	\$50.00	\$50.00	0.00%
Graduate School	Application Fee - intern'l applicants	0 to 999.99	\$75.00	\$75.00	0.00%
Graduate School	Application Fee - domestic applicants	0 to 999.99	\$55.00	\$55.00	0.00%
Graduate School	Graduate School Re-Admission/Change of Status	0.05 to 999.99	\$55.00	\$55.00	0.00%
Humphrey Inst of Public Affairs	HHH Technology Fee	0.05 to 5.99	\$125.00	\$125.00	0.00%
Humphrey Inst of Public Affairs	HHH Technology Fee	6 to 999.99	\$250.00	\$250.00	0.00%
Humphrey Inst of Public Affairs	HHH Technology Fee - summer	0.05 to 2.99	\$37.50	\$37.50	0.00%
Humphrey Inst of Public Affairs	HHH Technology Fee - summer	3 to 999.99	\$50.00	\$50.00	0.00%
Humphrey Inst of Public Affairs	Muskie Fellow Orientation Fee First Year	0.05 to 999.99	\$1,000.00	\$1,000.00	0.00%
Humphrey Inst of Public Affairs	Muskie Fellow Orientation Fee - second year	0.05 to 999.99	\$500.00	\$500.00	0.00%
Institute of Technology	ISE Year 2 Fee	0.05 to 999.99	\$850.00	\$850.00	0.00%
Institute of Technology	ISE Year 1 Fee	0.05 to 999.99	\$850.00	\$900.00	5.88%
Institute of Technology	MOT per credit fee	0.05 to 999.99	\$145.00	\$150.00	3.45%
Institute of Technology	ISE Year 3 Fee	0.05 to 999.99	\$850.00	\$850.00	0.00%
Institute of Technology	MOT Year 2 Fees	0.05 to 999.99	\$1,350.00	\$1,350.00	0.00%
Institute of Technology	MOT Year 1 Fee	0.05 to 999.99	\$1,350.00	\$1,400.00	3.70%
Institute of Technology	Locker Rental - Civil Eng	0.05 to 999.99	\$15.00	\$15.00	0.00%
Institute of Technology	Lab Key Deposit	0.05 to 999.99	\$5.00	\$5.00	0.00%
Institute of Technology	Environmental Lab Key Deposit	0.05 to 999.99	\$10.00	\$10.00	0.00%
Institute of Technology	Grad Student Office Key Deposit	0.05 to 999.99	\$20.00	\$20.00	0.00%
Institute of Technology	Desk Key Deposit	0.05 to 999.99	\$20.00	\$20.00	0.00%
Institute of Technology	Civi IEng Building Key Deposit	0.05 to 999.99	\$5.00	\$5.00	0.00%
Institute of Technology	Mechanical Eng - Key Deposit	0.05 to 999.99	\$15.00	\$15.00	0.00%
Institute of Technology	CEMS Key Deposit	0.05 to 999.99	\$5.00	\$5.00	0.00%
Institute of Technology	CEMS Key Deposit - Sub Master, Master	0.05 to 999.99	\$10.00	\$10.00	0.00%
Institute of Technology	E&CE Key Deposit	0.05 to 999.99	\$10.00	\$10.00	0.00%
Institute of Technology	CS&E Key Deposit	0.05 to 999.99	\$20.00	\$20.00	0.00%
Institute of Technology	Shepherd Lab Building Key Deposit	0.05 to 999.99	\$5.00	\$5.00	0.00%
Institute of Technology	IT Technology Fee	0.5 to 2.99	\$0.00	\$50.00	New Fee
Institute of Technology	IT Technology Fee - summer	3 to 5.99	\$85.00	\$100.00	17.65%
Institute of Technology	IT Technology Fee - fall & spring	6 to 999.99	\$170.00	\$200.00	17.65%
Institute of Technology	ISE per credit fee	0.05 to 999.99	\$113.00	\$120.00	6.19%
Institute of Technology	MOT late capstone fee	0.05 to 999.99	\$500.00	\$500.00	0.00%
Institute of Technology	ISE late capstone fee	0.05 to 999.99	\$500.00	\$500.00	0.00%
Institute of Technology	SE Year 1 & year 2 Fee	0.05 to 999.99	\$1,290.00	\$1,290.00	0.00%
Institute of Technology	Credit Exam Fee - Test out	0.05 to 999.99	\$50.00	\$50.00	0.00%
Law School	Law School Technology Fee for Summer School	0.05 to 999.99	\$160.00	\$180.00	12.50%
Law School	Law School Transcript Fee	0.05 to 999.99	\$5.00	\$5.00	0.00%
Law School	Law School Locker Fee	0.05 to 999.99	\$10.00	\$10.00	0.00%
Law School	Application Fee for Law School Students	0.05 to 999.99	\$70.00	\$70.00	0.00%
Law School	Law School Laptop Lease Fee for 3Ls & Joint Degree Students	0.05 to 999.99	\$250.00	\$250.00	0.00%
Law School	Beijing China Summer Program	0.05 to 5	\$2,221.93	\$2,221.93	0.00%
Law School	Beijing China Summer Program	6 to 6	\$500.00	\$500.00	0.00%
Law School	Technology/Academic Fee	0.05 to 999.99	\$400.00	\$450.00	12.50%
Law School	Beijing Summer 2007 Housing Fee	0.05 to 999.99	\$1,929.00	\$1,929.00	0.00%

Attachment 7 - Revised
University of Minnesota 2008-09 Tuition Plan: Academic/Term Fees - Per Semester

Campus/College	Fee Name	Credits	2008 Amount	2009 Amount	Percent Change
Law School	LLM Application Fee	0.05 to 999.99	\$70.00	\$70.00	0.00%
Law School	Laptop Purchase Charge	0.05 to 999.99	\$567.36	\$650.00	14.57%
Medical School	Mort Sci Technology Fee	0.05 to 999.99	\$50.00	\$50.00	0.00%
Medical School	Medical School Collegiate/tech fee for Medical Students	0.05 to 999.99	\$200.00	\$200.00	0.00%
Medical School	Medical School Collegiate/tech fee for Allied Health Students	0.05 to 999.99	\$150.00	\$150.00	0.00%
School of Nursing	Intent To Enroll - Baccalaureate Nursing Program	0.05 to 999.99	\$500.00	\$500.00	0.00%
School of Nursing	Collegiate Fee - Nurse Anesthesia Program	0.05 to 999.99	\$425.00	\$425.00	0.00%
School of Nursing	Nursing Baccalaureate Program Testing	0.05 to 999.99	\$66.00	\$66.00	0.00%
School of Nursing	Nursing Post Baccalaureate Program & MN Program Testing	0.05 to 999.99	\$50.00	\$50.00	0.00%
School of Nursing	Nursing Collegiate Fee - Undergraduate	0.05 to 9.99	\$12.90	\$12.90	0.00%
School of Nursing	Nursing Collegiate Fee - Undergraduate	10 to 999.99	\$129.00	\$129.00	0.00%
School of Nursing	Nursing Collegiate Fee - Graduate	0.05 to 5.99	\$21.50	\$21.50	0.00%
School of Nursing	Nursing Collegiate Fee - Graduate	6 to 999.99	\$129.00	\$129.00	0.00%
School of Nursing	Collegiate Fee-Masters in Nursing	0.05 to 5.99	\$21.50	\$21.50	0.00%
School of Nursing	Collegiate Fee-Masters in Nursing	6 to 999.99	\$129.00	\$129.00	0.00%
School of Nursing	Intent To Enroll - MN & DNP Programs	0.05 to 999.99	\$500.00	\$500.00	0.00%
School of Nursing	Nursing Collegiate Fee - Doctorate in Nursing Practice	0.05 to 5.99	\$21.50	\$21.50	0.00%
School of Nursing	Nursing Collegiate Fee - Doctorate in Nursing Practice	6 to 999.99	\$129.00	\$129.00	0.00%
International Programs	Int'l Stu Administrative Fee	0.02 to 999.99	\$75.00	\$75.00	0.00%
International Programs	International Student Aid Fee	0.05 to 999.99	\$12.00	\$12.00	0.00%
International Programs	Int'l Stu Administrative Fee-summer	0.05 to 999.99	\$35.00	\$35.00	0.00%
International Programs	International Student Aid Fee - summer	0.05 to 999.99	\$6.00	\$6.00	0.00%
College of Pharmacy	Pharmacy Collegiate Fee	0.05 to 999.99	\$110.00	\$150.00	36.36%
College of Pharmacy	Pharmacy Collegiate Fee	0.05 to 999.99	\$55.00	\$75.00	36.36%
College of Pharmacy	UMNDL Pharmacy Collegiate Fee - summer	0.05 to 999.99	\$55.00	\$75.00	36.36%
College of Pharmacy	UMNDL Pharmacy Collegiate Fee	0.05 to 999.99	\$110.00	\$150.00	36.36%
School of Public Health	Public Health Technology Fee	0.05 to 5.99	\$90.00	\$90.00	0.00%
School of Public Health	Public Health Technology Fee	6 to 999.99	\$115.00	\$115.00	0.00%
School of Public Health	Public Health Technology Fee - summer	0.05 to 2.99	\$45.00	\$45.00	0.00%
School of Public Health	Public Health Technology Fee - summer	3 to 999.99	\$57.50	\$57.50	0.00%
College of Continuing Ed	CCE Collegiate Fee - summer	0.05 to 999.99	\$18.00	\$18.50	2.78%
College of Continuing Ed	CCE Collegiate Fee	0.05 to 999.99	\$36.00	\$37.00	2.78%
College of Continuing Ed	ITI Program Technology Fee	0 to 999.99	\$170.00	\$200.00	17.65%
College of Continuing Ed	Independent and Distance Learning	2 to 5.99	\$82.50	\$85.00	3.03%
College of Continuing Ed	Independent and Distance Learning	6 to 10.99	\$165.00	\$170.00	3.03%
College of Continuing Ed	Independent and Distance Learning	11 to 999.99	\$247.50	\$255.00	3.03%
College of Continuing Ed	ITI Program Technology Fee	0.05 to 999.99	\$85.00	\$100.00	17.65%
University Services	Transportation Fee	0.05 to 999.99	\$16.00	\$16.00	0.00%
College of Veterinary Medicine	Collegiate fee	0.05 to 999.99	\$250.00	\$275.00	10.00%

Attachment 8 - Revised
University of Minnesota 2008-09 Tuition Plan:
Course Fees in Lieu of Tuition - Per Semester

Campus/College	Class Name	Fee Purpose	Type	2008	2009	Percent Change
Duluth	Various courses - CITS Program Fee	Tuition	Flat	\$90.00	\$84.44	-6.18%
Duluth	Various courses - CE Special Credit Program Fee	Tuition	Per Credit	\$85.00	\$88.00	3.53%
Duluth	Various courses - CE Educators' Instit. (Grad)	Tuition	Per Credit	\$265.00	\$265.00	0.00%
Duluth	Various courses - CE-Educators' Instit. (Undergrad)	Tuition	Per Credit	\$225.00	\$225.00	0.00%
Duluth	EHS 799 CEHSP Masters Active Status	Tuition	Flat	\$5.40	\$5.56	2.96%
Duluth	FST 1105 Study in England Program	Tuition	Flat	\$9,500.00	\$11,500.00	21.05%
Duluth	FST 1105 Study in England Program	Tuition	Flat	\$6,550.00	\$7,800.00	19.08%
Duluth	FST 1105 Study in England Program	Tuition	Flat	New Fee	\$850.00	New Fee
Duluth	FST 1110 UMD Study in Western Australia	Tuition	Flat	\$500.00	\$400.00	-20.00%
Duluth	FST 1110 UMD Study in Western Australia	Tuition	Flat	\$7,400.00	\$8,950.00	20.95%
Duluth	FST 1115 Exchange Program Scandinavia	Tuition	Flat	\$500.00	\$400.00	-20.00%
Duluth	FST 1115 Exchange Program Scandinavia	Tuition	Flat	\$3,370.00	\$3,900.00	15.73%
Duluth	FST 1120 Foreign Study Experience	Tuition	Flat	\$250.00	\$250.00	0.00%
Duluth	FST 1120 Foreign Study Experience	Tuition	Flat	\$34.00	\$36.00	5.88%
Duluth	FST 1135 UMD Exch in Western Australia	Tuition	Flat	\$500.00	\$400.00	-20.00%
Duluth	FST 1135 UMD Exch in Western Australia	Tuition	Flat	\$7,400.00	\$8,950.00	20.95%
Duluth	FST 1140 UMD Study in New Zealand	Tuition	Flat	\$7,300.00	\$8,050.00	10.27%
Duluth	FST 1140 UMD Study in New Zealand	Tuition	Flat	\$500.00	\$400.00	-20.00%
Duluth	FST 1145 UMD Exchange Program in Engl	Tuition	Flat	\$500.00	\$400.00	-20.00%
Duluth	FST 1145 UMD Exchange Program in Engl	Tuition	Flat	\$3,100.00	\$3,900.00	25.81%
Duluth	GRAD 999 Graduate School Active Status	Tuition	Flat	\$5.40	\$5.56	2.96%
Duluth	SSP 103 Basic Math	Tuition	Flat	\$888.45	\$951.45	7.09%
Twin Cities						
Academic Health Center	OT 7696 - Level II Fieldwork II (6-14 credits)	Tuition	Flat	New Fee	\$5,235.25	New Fee
Academic Health Center	OT 7696 - Level II Fieldwork II (per credit over 14)	Tuition	Per credit	New Fee	\$872.55	New Fee
College of Design	ARCH 5101 Architectural Design Studies - summer	Tuition	Flat	New Fee	\$4,942.00	New Fee
College of Biological Sci.	EEB 4842 Arctic Field Ecology	Tuition	Flat	\$4,250.00	\$4,375.00	2.94%
College of Ed/Human Dev	CI 5410 Spec Topics: Teaching Literacy	Tuition	Flat	\$469.50	\$469.50	0.00%
College of Ed/Human Dev	CI 5540 Spec Topics: Science Ed	Tuition	Flat	\$585.00	\$585.00	0.00%
College of Ed/Human Dev	CI 5671 Content-Based L2 Curric & Inst	Tuition	Flat	\$175.00	\$175.00	0.00%
College of Ed/Human Dev	EDPA 5080 Special Topics: EdPA	Tuition	Per Credit	\$175.00	\$175.00	0.00%
College of Ed/Human Dev	EDPA 5080 Special Topics: EdPA	Tuition	Flat	\$234.75	\$234.75	0.00%
College of Liberal Arts	ID 3561 Literature in Social Context	Tuition	Flat	\$7,000.00	\$7,300.00	4.29%
College of Liberal Arts	ID 3571 HECUA Mtro Urb Stud	Tuition	Flat	\$7,000.00	\$7,300.00	4.29%
College of Liberal Arts	ID 3581 City Arts - Reading Seminar	Tuition	Flat	\$7,000.00	\$7,300.00	4.29%
College of Liberal Arts	ID 3591 Adaptive Ecosystem Management	Tuition	Flat	\$7,000.00	\$7,300.00	4.29%
College of Liberal Arts	GLOS 3900 topics	Tuition	Flat	New Fee	\$4,050.00	New Fee
Carlson School of Mngt	Various courses - IBUS Study Abroad (Grad)	Tuition	Per Credit	New Fee	\$923.00	New Fee
Carlson School of Mngt	Various courses - IBUS Study Abroad (Undergrad)	Tuition	Flat	New Fee	\$328.00	New Fee
School of Dentistry	DENT 6000 Dent Clin	Tuition	Per Credit	\$727.00	\$792.00	8.94%
School of Dentistry	DENT 6000 Dent Clin	Tuition	Per Credit	\$414.00	\$445.00	7.49%
College of Continuing Ed	Various courses - Intensive English Program (IEP)	Tuition	Flat	\$1,000.00	\$1,025.00	2.50%
College of Continuing Ed	Various courses - Intensive English Program (IEP)	Tuition	Flat	\$2,000.00	\$2,050.00	2.50%
College of Continuing Ed	Various courses - Intensive English Program (IEP)	Tuition	Flat	\$765.00	\$785.00	2.61%
College of Continuing Ed	Various courses - Intensive English Program (IEP)	Tuition	Flat	\$3,000.00	\$3,000.00	0.00%
College of Continuing Ed	Various courses - College in the Schools	Tuition	Flat	\$139.00	\$143.00	2.88%
College of Continuing Ed	Various courses - MELP Preparation Course Fee	Tuition	Flat	New Fee	\$575.00	New Fee
College of Continuing Ed	Various courses - Intensive English Program (IEP)	Tuition	Flat	New Fee	\$1,570.00	New Fee
College of Continuing Ed	OPH 1101 Academic Studies OPHTECH	Tuition	Flat	\$120.00	\$120.00	0.00%
College of Continuing Ed	OPH 1201 Basic Science OPHTHTECHS	Tuition	Flat	\$120.00	\$120.00	0.00%
College of Continuing Ed	OPH 1301 Basic Science OPHTH Techs	Tuition	Flat	\$120.00	\$120.00	0.00%
College of Continuing Ed	OPH 1401 Clin Assist: OPH Tech	Tuition	Flat	\$120.00	\$120.00	0.00%
College of Continuing Ed	OPH 1501 Ophthalmic Tech Externship	Tuition	Flat	\$200.00	\$200.00	0.00%
College of Continuing Ed	OPH 1601 Oph Tech Externship	Tuition	Flat	\$200.00	\$200.00	0.00%
College of Continuing Ed	OPH 1701 Oph Tech Externship	Tuition	Flat	\$200.00	\$200.00	0.00%

Updated Estimate with Actual Carryforward
F.Y. 2008

Approved Budget
F.Y. 2009

	O & M	Tuition	State Special	IC R	Central Reserves	University Fee	Total	Support Unit Pools	Budgeted Allocations	O & M	Tuition	State Special	IC R	Central Reserves	University Fee	Total	Support Unit Pools	Budgeted Allocations
ANNUAL RESOURCES																		
State Legislative Appropriations																		
General Appropriation	618,034,000	0	0	0	0	0	618,034,000	0	618,034,000	632,070,300	0	0	0	0	0	632,070,300	0	632,070,300
MinnesotaCare	0	0	2,157,000	0	0	0	2,157,000	0	2,157,000	0	0	2,157,000	0	0	0	2,157,000	0	2,157,000
Cigarette Tax	0	0	22,250,000	0	0	0	22,250,000	0	22,250,000	0	0	22,250,000	0	0	0	22,250,000	0	22,250,000
Miscellaneous Special	0	0	24,700,000	0	0	0	24,700,000	0	24,700,000	0	0	0	0	0	0	0	0	0
Agriculture Special	0	0	53,175,000	0	0	0	53,175,000	0	53,175,000	0	0	52,175,000	0	0	0	52,175,000	0	52,175,000
Health Sciences Special	0	0	5,275,000	0	0	0	5,275,000	0	5,275,000	0	0	5,275,000	0	0	0	5,275,000	0	5,275,000
Technology Special	0	0	1,387,000	0	0	0	1,387,000	0	1,387,000	0	0	1,387,000	0	0	0	1,387,000	0	1,387,000
System Special	0	0	6,551,000	0	0	0	6,551,000	0	6,551,000	0	0	6,154,700	0	0	0	6,154,700	0	6,154,700
Subtotal - State Appropriations	618,034,000	0	115,495,000	0	0	0	733,529,000	0	733,529,000	632,070,300	0	89,398,700	0	0	0	721,469,000	0	721,469,000
Tuition and U Fee																		
Tuition/U Fee - Twin Cities	0	441,578,385	0	0	0	42,918,854	484,497,239	0	484,497,239	0	468,594,004	0	0	0	46,565,967	515,159,971	0	515,159,971
Tuition/U Fee - Duluth	0	71,086,916	0	0	0	9,615,911	80,702,827	0	80,702,827	0	76,074,371	0	0	0	10,352,186	86,426,557	0	86,426,557
Tuition/U Fee - Morris	0	10,027,623	0	0	0	1,490,000	11,517,623	0	11,517,623	0	10,530,997	0	0	0	1,628,000	12,158,997	0	12,158,997
Tuition/U Fee - Rochester	0	517,351	0	0	0	50,060	567,411	0	567,411	0	554,712	0	0	0	60,209	614,921	0	614,921
Tuition/U Fee - Crookston	0	6,813,040	0	0	0	1,089,060	7,902,100	0	7,902,100	0	7,290,160	0	0	0	1,183,334	8,473,494	0	8,473,494
Subtotal - Tuition/U Fee	0	530,023,315	0	0	0	55,163,885	585,187,200	0	585,187,200	0	563,044,244	0	0	0	59,789,696	622,833,940	0	622,833,940
Tuition Adjustment	0	2,033,634	0	0	0	141,183	2,174,817	0	2,174,817	0	0	0	0	0	0	0	0	0
Application/Bursar Fees	3,600,000	0	0	0	0	0	3,600,000	0	3,600,000	3,600,000	0	0	0	0	0	3,600,000	0	3,600,000
Subtotal - Tuition and Fees	3,600,000	2,033,634	0	0	0	141,183	5,774,817	0	5,774,817	3,600,000	0	0	0	0	0	3,600,000	0	3,600,000
Indirect Cost Recovery	0	0	0	106,527,124	0	0	106,527,124	0	106,527,124	0	0	0	109,538,697	0	0	109,538,697	0	109,538,697
Investment Income (net)																		
Gross Investment Income	0	0	0	0	25,000,000	0	25,000,000	0	25,000,000	0	0	0	0	21,175,000	0	21,175,000	0	21,175,000
Raise Internal Loan Rate	0	0	0	0	0	0	0	0	0	0	0	0	0	0	0	0	0	0
Inv. Income - To Participants	0	0	0	0	(600,000)	0	(600,000)	0	(600,000)	0	0	0	0	(600,000)	0	(600,000)	0	(600,000)
Subtotal - Investment Income (net)	0	0	0	0	24,400,000	0	24,400,000	0	24,400,000	0	0	0	0	20,575,000	0	20,575,000	0	20,575,000
Other																		
Internal Cost Pool Receipts	0	0	0	0	0	0	0	449,867,160	449,867,160	0	0	0	0	0	0	0	470,216,642	470,216,642
Enterprise Assessment	11,259,774	0	0	0	0	0	11,259,774	0	11,259,774	11,474,583	0	0	0	0	0	11,474,583	0	11,474,583
Other Income	0	0	0	0	100,000	0	100,000	0	100,000	0	0	0	0	650,000	0	650,000	0	650,000
Subtotal - Other	11,259,774	0	0	0	100,000	0	11,359,774	449,867,160	461,226,934	11,474,583	0	0	0	650,000	0	12,124,583	470,216,642	482,341,225
Annual Revenue	632,893,774	532,056,949	115,495,000	106,527,124	24,500,000	55,305,068	1,466,777,915	449,867,160	1,916,645,075	647,144,883	563,044,244	89,398,700	109,538,697	21,225,000	59,789,696	1,490,141,220	470,216,642	1,960,357,862
Net Interfund Transfers																		
From Cen Res for Financial Aid	1,400,000	0	0	0	(1,400,000)	0	0	0	0	1,400,000	0	0	0	(1,400,000)	0	0	0	0
Into Ufee from Cres/O&M/ICR	0	0	0	(2,272,024)	0	2,272,024	0	0	0	0	0	0	0	0	0	0	0	0
Into O&M from ICR	0	0	0	0	0	0	0	0	0	2,379,000	0	0	(2,379,000)	0	0	0	0	0
Into O&M from Central Reserves	13,973,103	0	0	0	(13,973,103)	0	0	0	0	10,573,103	0	0	0	(10,573,103)	0	0	0	0
Into O&M from Inv. Earnings	725,000	0	0	0	(725,000)	0	0	0	0	725,000	0	0	0	(725,000)	0	0	0	0
Subtotal - Net Transfers	16,098,103	0	0	(2,272,024)	(16,098,103)	2,272,024	0	0	0	15,077,103	0	0	(2,379,000)	(12,698,103)	0	0	0	0

Updated Estimate with Actual Carryforward
F.Y. 2008

Approved Budget
F.Y. 2009

	O & M	Tuition	State Special	I C R	Central Reserves	University Fee	Total	Support Unit Pools	Budgeted Allocations	O & M	Tuition	State Special	I C R	Central Reserves	University Fee	Total	Support Unit Pools	Budgeted Allocations	
Academic Health Center																			
Duluth School of Medicine	5,209,938	2,711,540	225,000	729,333	0	151,174	9,026,985	0	9,026,985	0	0	0	0	0	0	0	0	0	0
Dentistry	14,629,599	11,620,000	144,000	1,257,000	0	675,000	28,325,599	0	28,325,599	15,112,952	12,478,389	144,000	650,000	0	725,000	29,110,341	0	29,110,341	
Senior VP-Hlth Sciences	0	0	0	0	0	0	0	11,045,367	11,045,367	0	0	0	0	0	0	0	11,431,175	11,431,175	
Academic Hlth Center - Shared	41,984,003	1,764,152	6,203,173	7,865,837	0	107,411	57,924,576	0	57,924,576	50,792,247	2,096,616	6,203,173	8,928,683	0	175,541	68,196,260	0	68,196,260	
Medical School	67,017,041	28,502,019	18,209,760	38,090,407	0	2,198,266	154,017,493	0	154,017,493	75,603,898	32,492,186	18,434,760	39,000,000	0	2,488,380	168,019,224	0	168,019,224	
Nursing	6,980,653	7,024,978	444,000	640,514	0	692,764	15,782,909	0	15,782,909	6,825,653	7,500,608	444,000	653,324	0	750,204	16,173,789	0	16,173,789	
Pharmacy	7,624,428	13,150,000	1,444,000	2,219,981	0	840,000	25,278,409	0	25,278,409	8,418,292	14,073,000	1,444,000	2,330,000	0	925,000	27,190,292	0	27,190,292	
Public Health	12,158,324	10,437,654	5,272,564	13,932,220	0	817,457	42,618,219	0	42,618,219	12,952,150	11,169,249	372,564	14,483,644	0	882,467	39,860,074	0	39,860,074	
Veterinary Medicine	17,793,554	10,784,000	3,805,516	1,528,000	0	482,000	34,393,070	0	34,393,070	19,280,979	11,675,000	3,805,516	1,605,829	0	531,000	36,898,324	0	36,898,324	
Total - Academic Health Center	173,397,540	85,994,343	35,748,013	66,263,292	0	5,964,072	367,367,260	11,045,367	378,412,627	188,986,171	91,485,048	30,848,013	67,651,480	0	6,477,592	385,448,304	11,431,175	396,879,479	
Duluth	50,252,258	71,086,916	3,242,389	1,960,304	0	9,615,911	136,157,778	0	136,157,778	49,756,076	76,074,371	2,946,873	1,960,304	250,000	10,352,186	141,339,810	0	141,339,810	
Morris	20,023,670	10,027,623	280,363	77,100	0	1,490,000	31,898,756	0	31,898,756	20,266,670	10,530,997	280,363	77,836	0	1,628,000	32,783,866	0	32,783,866	
Crookston	12,406,713	6,813,040	0	18,932	0	1,089,060	20,327,745	0	20,327,745	12,404,713	7,290,160	0	19,311	0	1,183,334	20,897,518	0	20,897,518	
Rochester	1,542,773	517,351	450,000	0	0	50,060	2,560,184	0	2,560,184	7,857,773	554,712	450,000	0	0	60,209	8,922,694	0	8,922,694	
Contingencies and Reserves																			
General Contingency	0	0	0	0	1,400,000	0	1,400,000	0	1,400,000	0	0	0	0	1,400,000	0	1,400,000	0	1,400,000	
Total - Contingencies & Reserves	0	0	0	0	1,400,000	0	1,400,000	0	1,400,000	0	0	0	0	1,400,000	0	1,400,000	0	1,400,000	
Special Allocations (TINA)																			
Reserve - Initiatives	2,328,299	0	0	0	16,040,973	0	18,369,272	1,750,000	20,119,272	4,857,079	0	0	0	0	0	4,857,079	1,518,000	6,375,079	
R2000 Scholarships	0	0	0	0	0	0	0	0	0	850,000	0	0	0	0	0	850,000	0	850,000	
08-09 Biennial Initiatives	8,295,000	0	0	0	0	0	8,295,000	0	8,295,000	2,400,000	0	0	0	0	0	2,400,000	0	2,400,000	
Graduate Assistant Support	2,400,000	0	0	0	0	0	2,400,000	0	2,400,000	2,400,000	0	0	0	0	0	2,400,000	0	2,400,000	
Enterprise Project	8,542,592	0	0	0	0	0	8,542,592	0	8,542,592	8,757,401	0	0	0	0	0	8,757,401	0	8,757,401	
Extension Severance	60,000	0	0	0	0	0	60,000	0	60,000	60,000	0	0	0	0	0	60,000	0	60,000	
Mid Income Scholarship	0	0	0	0	0	0	0	0	0	2,000,000	0	0	0	3,060,000	0	5,060,000	0	5,060,000	
Students Accts. Receivable	700,000	0	0	0	0	0	700,000	0	700,000	0	0	0	0	0	0	0	0	0	
06-07 Biennial Initiatives	3,388,842	0	0	0	0	0	3,388,842	0	3,388,842	1,167,355	0	0	0	0	0	1,167,355	0	1,167,355	
Holding Debt Balance	1,167,578	0	0	0	0	0	1,167,578	0	1,167,578	1,167,578	0	0	0	0	0	1,167,578	0	1,167,578	
MDH Building Costs	1,956,068	0	0	0	0	0	1,956,068	0	1,956,068	0	0	0	0	0	0	0	0	0	
Rochester/Mayo Appropriation	5,000,000	0	19,500,000	0	0	0	24,500,000	0	24,500,000	0	0	0	0	0	0	0	0	0	
Retention Pool	724,927	0	0	0	0	0	724,927	0	724,927	0	0	0	0	0	0	0	0	0	
Total - Special Allocations	34,563,306	0	19,500,000	0	16,040,973	0	70,104,279	1,750,000	71,854,279	23,659,413	0	0	0	3,060,000	0	26,719,413	1,518,000	28,237,413	
ALLOCATIONS	644,154,905	530,023,315	115,495,000	106,527,124	17,535,973	55,163,885	1,468,900,202	449,867,160	1,918,767,362	666,802,636	563,044,244	89,398,700	109,538,697	4,805,000	59,789,696	1,493,378,973	470,216,642	1,963,595,615	

Attachment 11



REGENTS OF THE UNIVERSITY OF MINNESOTA RESOLUTION RELATED TO THE FISCAL YEAR 2008-09 OPERATING BUDGET

WHEREAS, the University of Minnesota as the state's public, land grant university is charged with the responsibility to pursue knowledge and to help apply that knowledge through research and discovery, teaching and learning, and outreach and public service; and

WHEREAS, the State of Minnesota, through its legislative and executive branches, has appropriated \$721,469,000 in state general fund monies for fiscal year 2008-09 to the University of Minnesota, which represents an increase of \$10,886,300 in the Operations & Maintenance appropriation and a decrease of \$26,396,300 in the State Special appropriations compared to the prior year's base level funding, for the pursuit of its mission and in support of our goals and objectives; and

WHEREAS, the University of Minnesota is committed to achieving standards of national and international excellence; and

WHEREAS, the future of the University is premised on partnerships within the University community of faculty, staff and students, with the State of Minnesota, other educational institutions, business and industry, University alumni, local communities, and the citizens of Minnesota; and

WHEREAS, the University of Minnesota must be positioned to maintain desired undergraduate enrollment levels and enrollment profiles on each campus as the number of high school graduates declines over the next 5-10 years in the reciprocity states from which the University recruits most of its nonresident students,

NOW, THEREFORE, BE IT RESOLVED that the Board of Regents hereby approves the University of Minnesota Fiscal Year 2008-09 Operating Budget as follows:

The annual revenue and expenditure plan for current, non-sponsored funds and projected expenditures for sponsored funds for fiscal year 2008-09.

The Fiscal Year 2008-09 Operating Budget approved by the Board of Regents includes the following attachments which are included in the President's Recommended Fiscal Year 2008-09 Operating Budget:

Attachment 1 Revised - Resource and Expenditure Budget Plan (University Fiscal Page)

Attachment 2 Revised - University of Minnesota 2008-09 Tuition Plan: Tuition Rates

Attachment 6 Revised - University of Minnesota 2008-09 Tuition Plan: Course Fees

Attachment 7 Revised - University of Minnesota 2008-09 Tuition Plan: Academic Term Fees

Attachment 8 – Revised - University of Minnesota 2008-09 Tuition Plan: Fees in Lieu of Tuition

Attachment 9 - Student Services Fees

Attachment 10 Revised - Fund Forecast - Centrally Distributed and Attributed Funds